

Elliptical Galaxies



Giant elliptical M87

Spiral Galaxies



Strongly Barred spiral (SBbc) NGC 1300

Spiral Galaxies

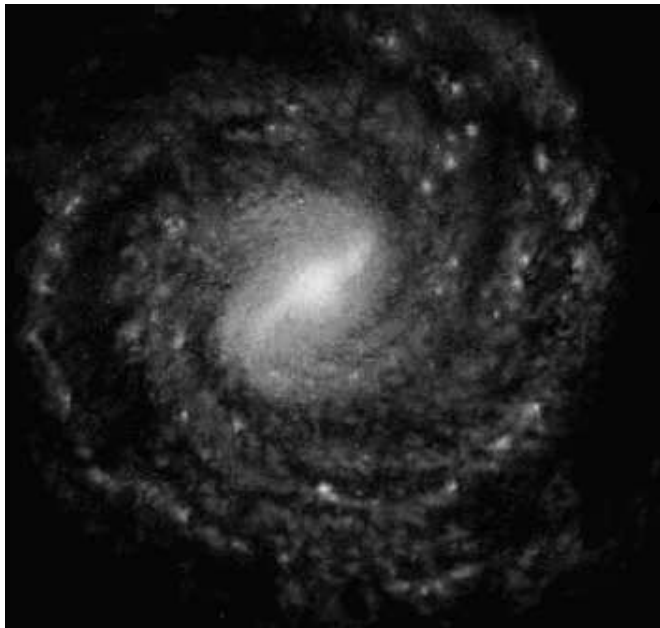


Weakly barred spiral
(SABc) NGC 674



Unbarred spiral (SAab) NGC 4622

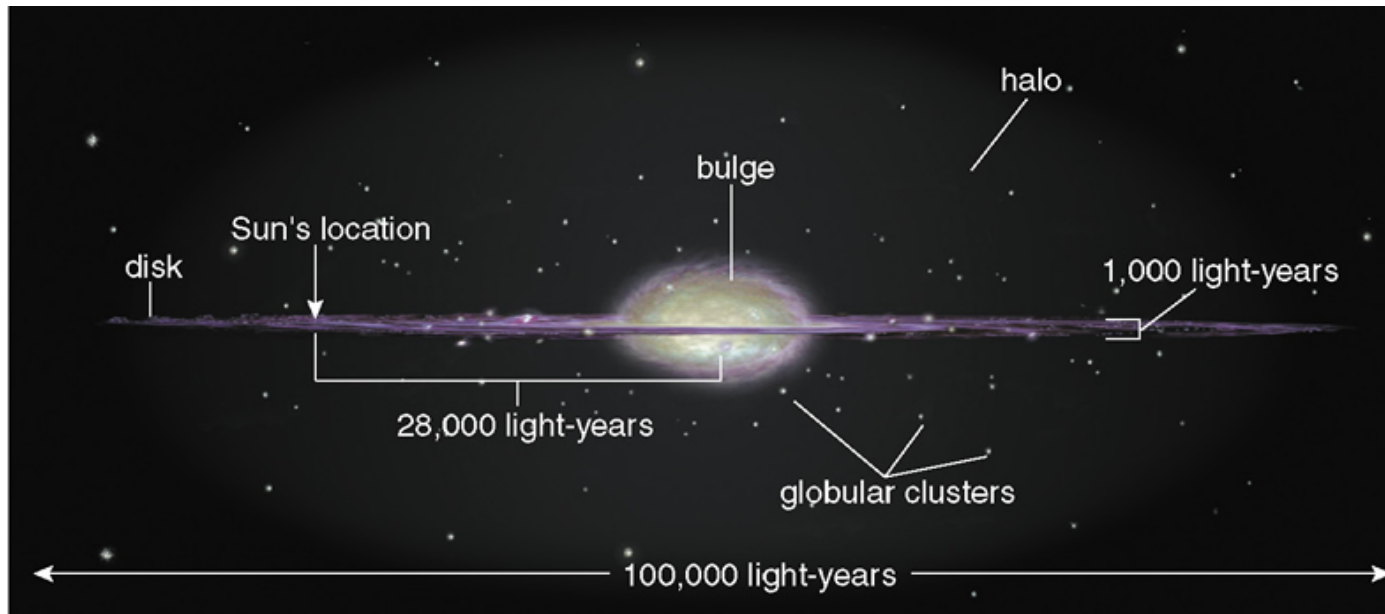
Milky Way = a barred spiral galaxy



Face-on view
(Artist's conception)



Edge-on view :
Actual infrared image
from COBE satellite



Edge-on view
(Artist's conception)

Spiral Galaxies

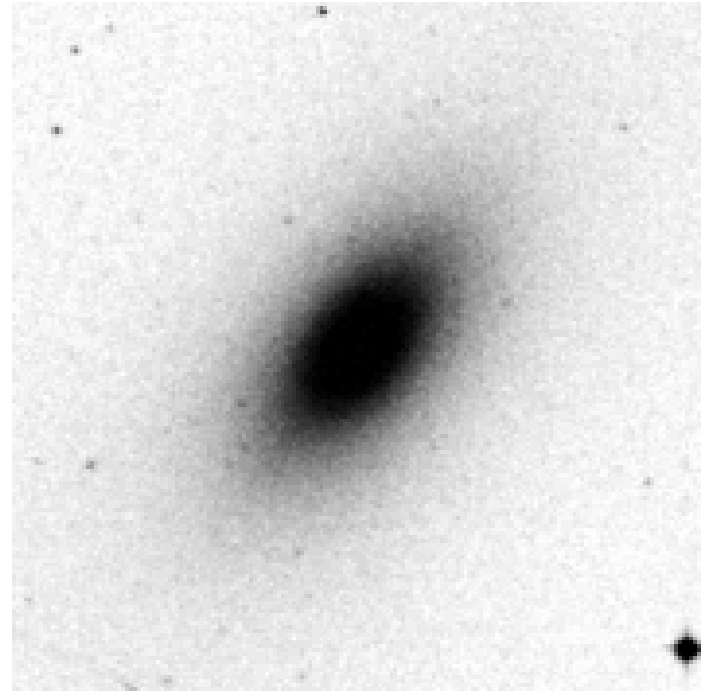


NGC 4594 or M104 (Sombrero) ; HST image
Spiral, with a large bulge and a dusty disk, seen edge-on

Lenticular (S0) Galaxies : S0 vs E



NGC 1351) = S0-



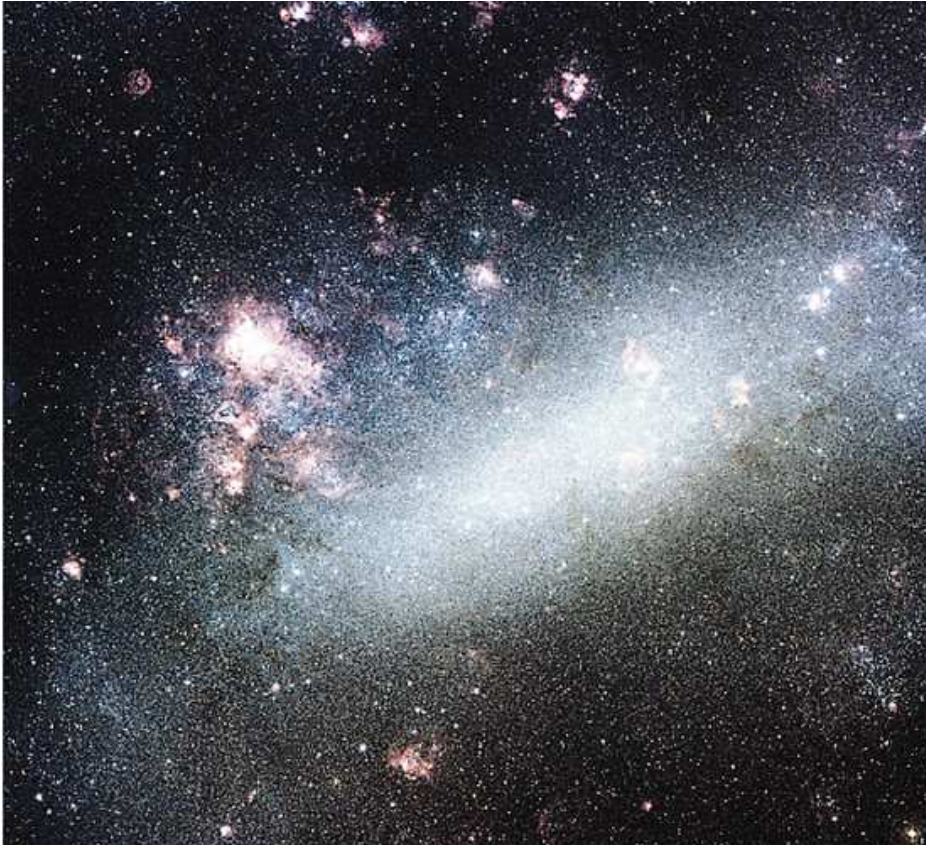
NGC 720 = Elliptical (E5)

Spiral and Lenticular (S0) Galaxies



M51a (NGC 5194) = spiral galaxy with grand-design spiral arms (Whirlpool galaxy)
M 1b (NGC 5195) = barred S0 galaxy pec (Credit Hubble Heritage Team)

Irregular Galaxies



LMC; Irr; 10 kpc across

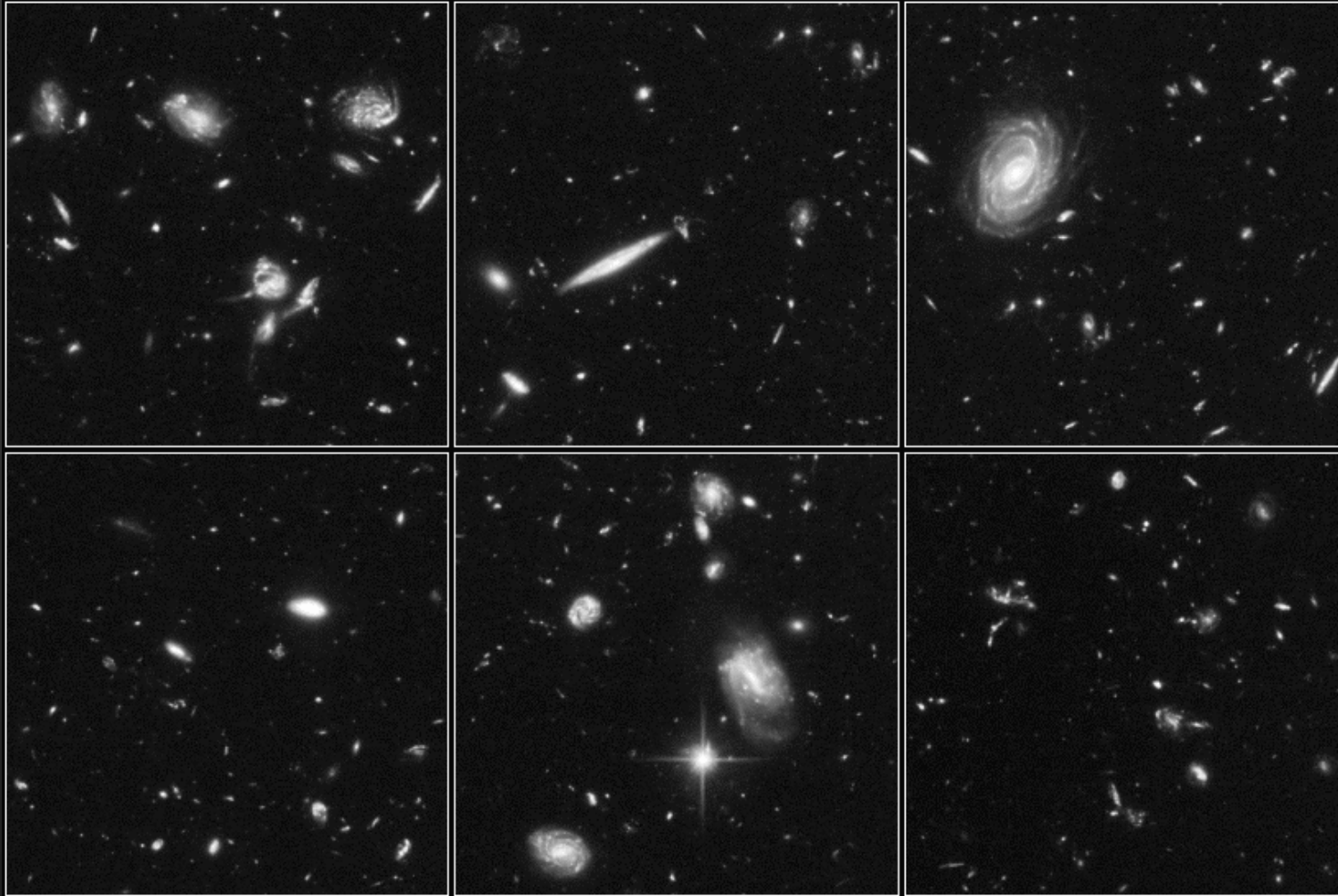


SMC; Irr ; 6 kpc across

Dwarf Galaxies



Leo I, dwarf elliptical



Faint blue galaxies in the Hubble Ultra Deep field...dwarf galaxies?

Peculiar/Interacting Galaxies



Polar ring galaxy NGC 4650



Cartwheel galaxy
Head-on collision

Ring galaxy AM 0644-741 50,000 ly across

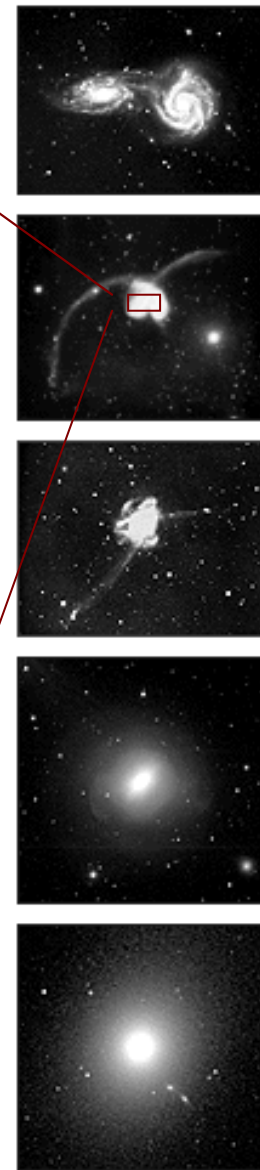
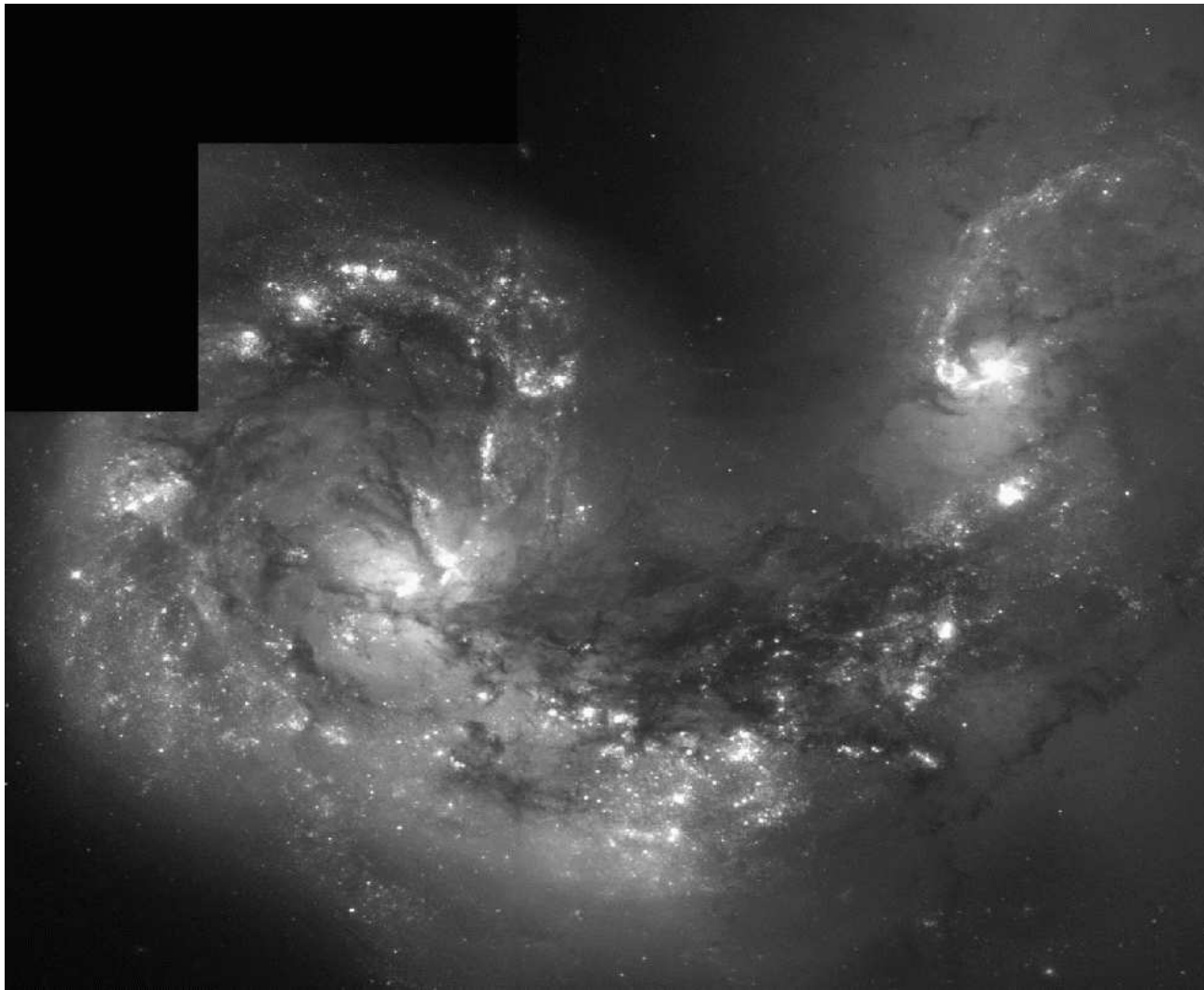


Peculiar/Interacting Galaxies



A dusty gas-rich warped disk inside an elliptical-like older system

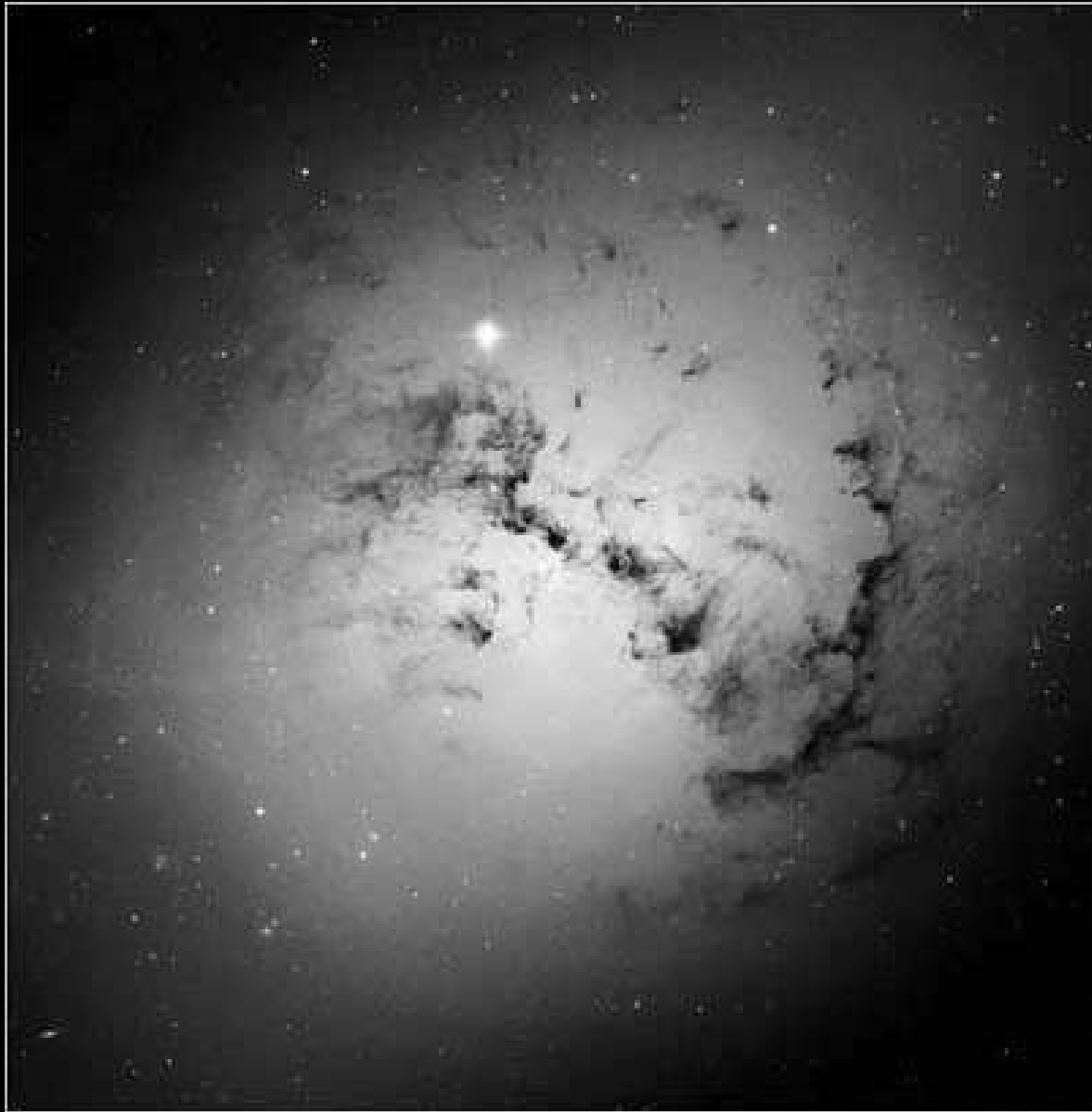
Peculiar/Interacting Galaxies



The Antennae system: The HST image shows the central region only: it confirms the presence of 2 disks with gas stripped out

Peculiar/Interacting Galaxies

Elliptical Galaxy NGC 1316



The Elliptical/Peculiar galaxy (NGC 1316)
à recently accreted
small gas-rich galaxies