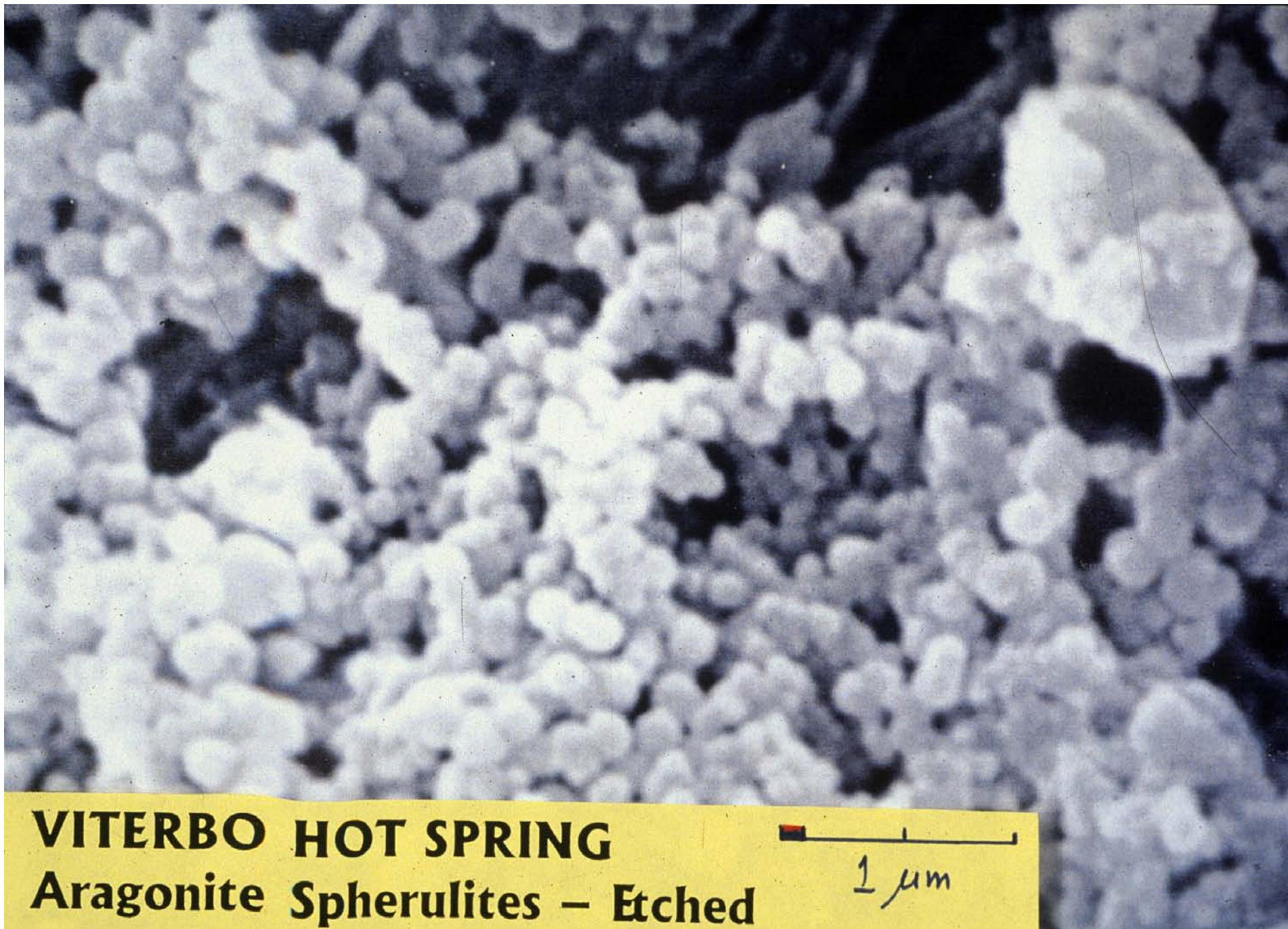


**VITERBO HOT SPRINGS, Italy**  
**Calcite Crystal – Etched**

300 nm



**VITERBO HOT SPRING**  
**Aragonite Spherulites – Etched**

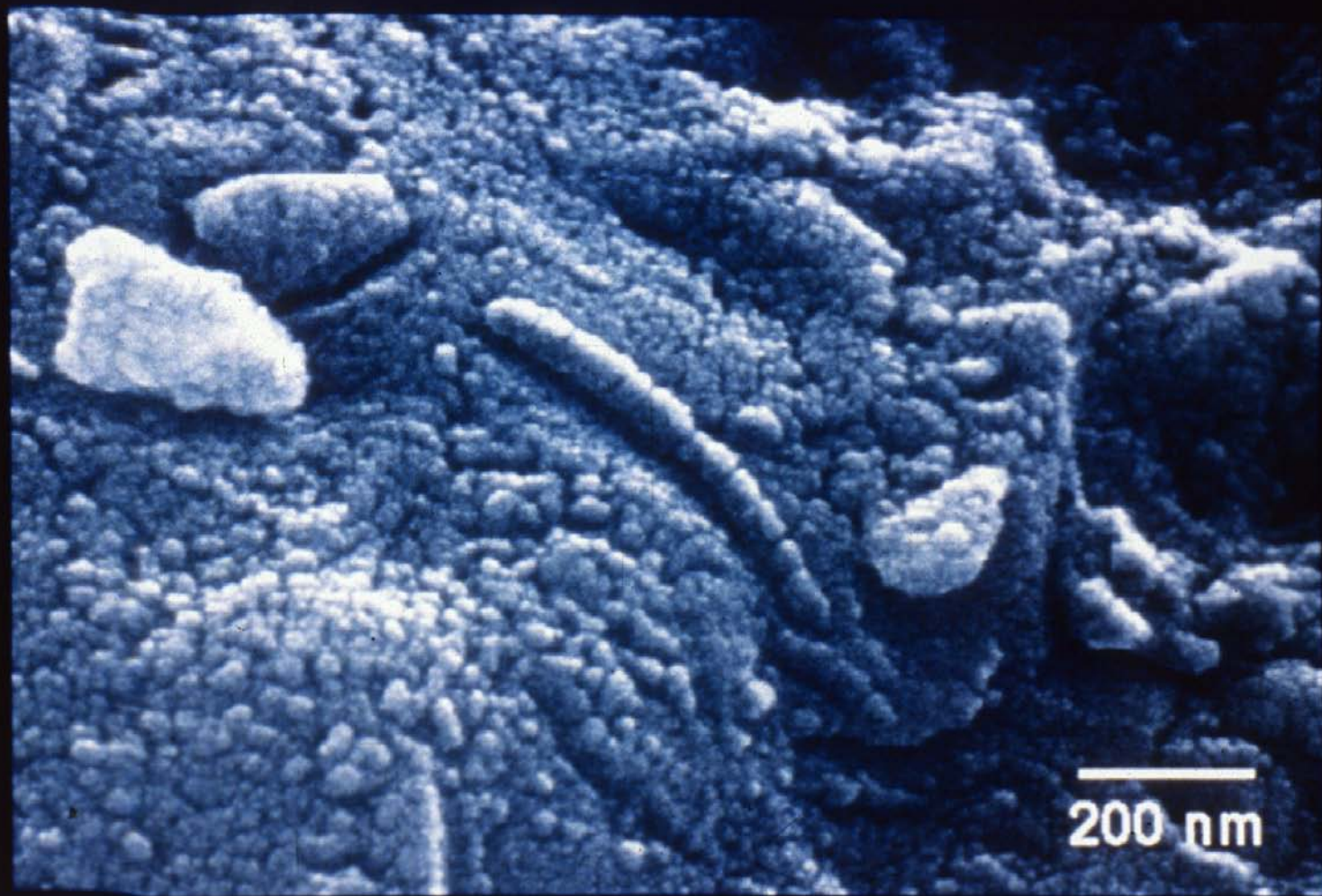
1  $\mu\text{m}$

To: Bob Folk

The "Father" of *Nannobacteria*

Mars Lives!

**ALH84001**

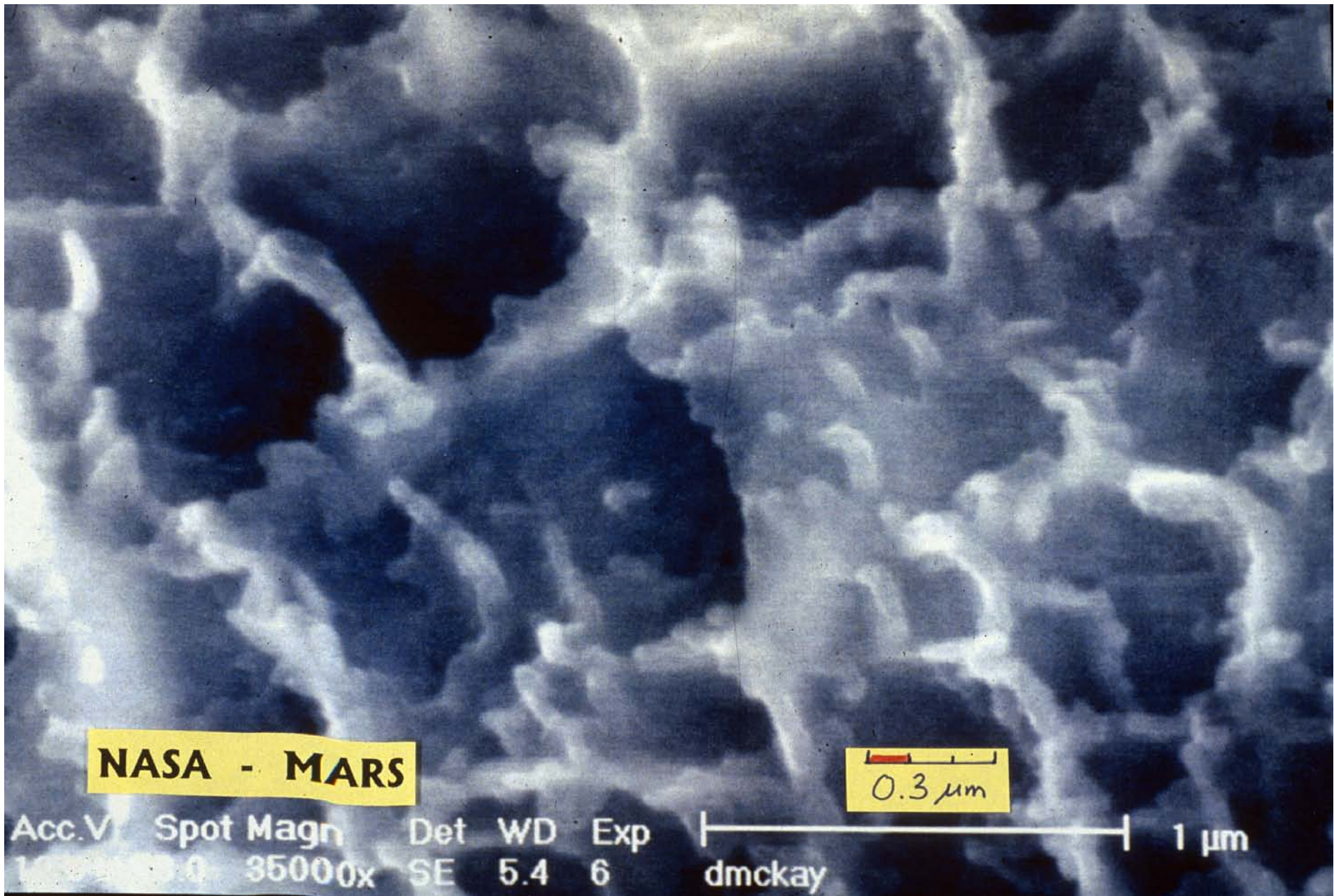


Everett R. Zubrick

David S. McKay

Walter Cherno Kupita



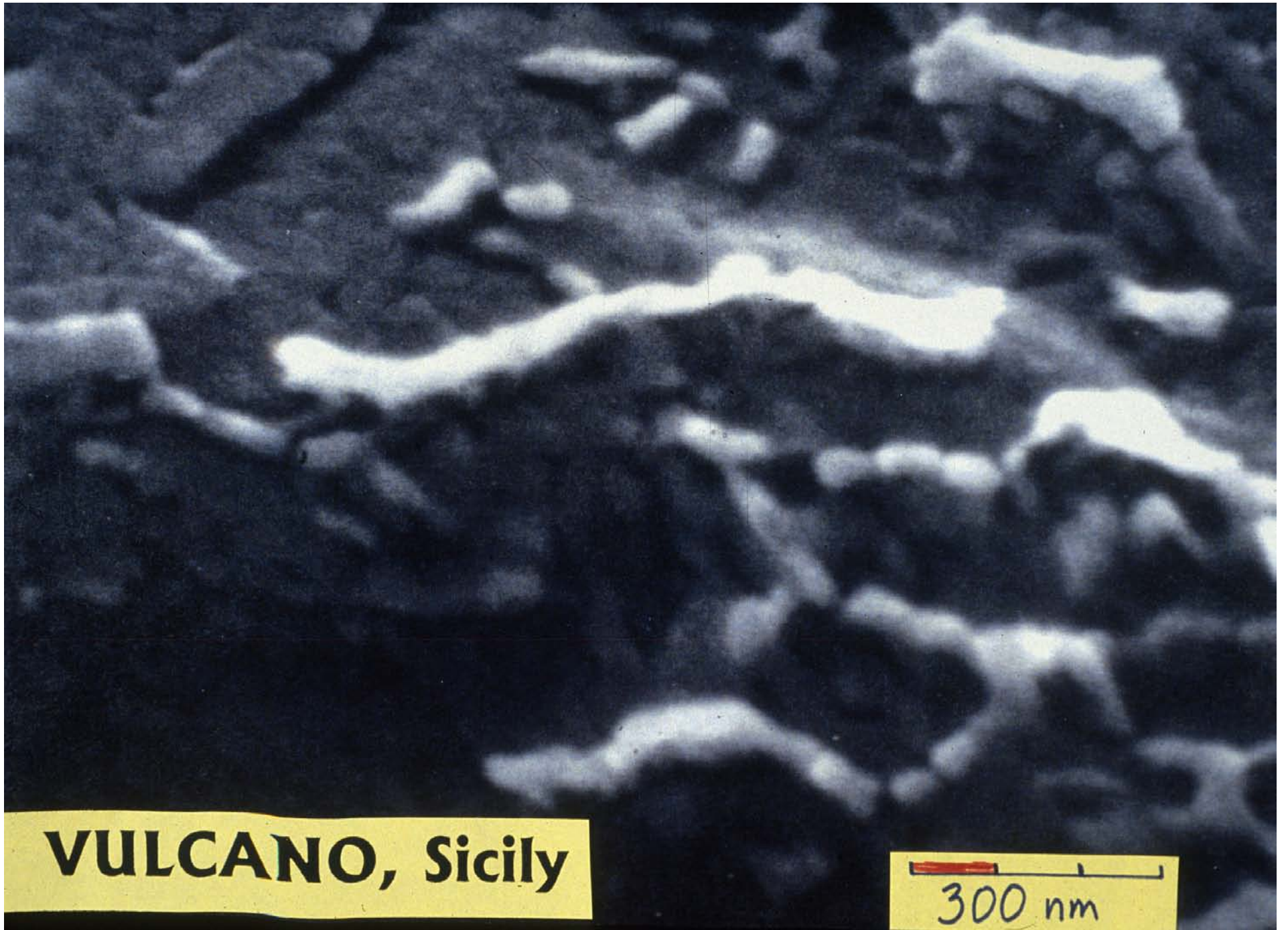


**NASA - MARS**

0.3  $\mu\text{m}$

Acc.V Spot Magn Det WD Exp  
15.0kV 5.0 35000x SE 5.4 6

1  $\mu\text{m}$   
dmckay



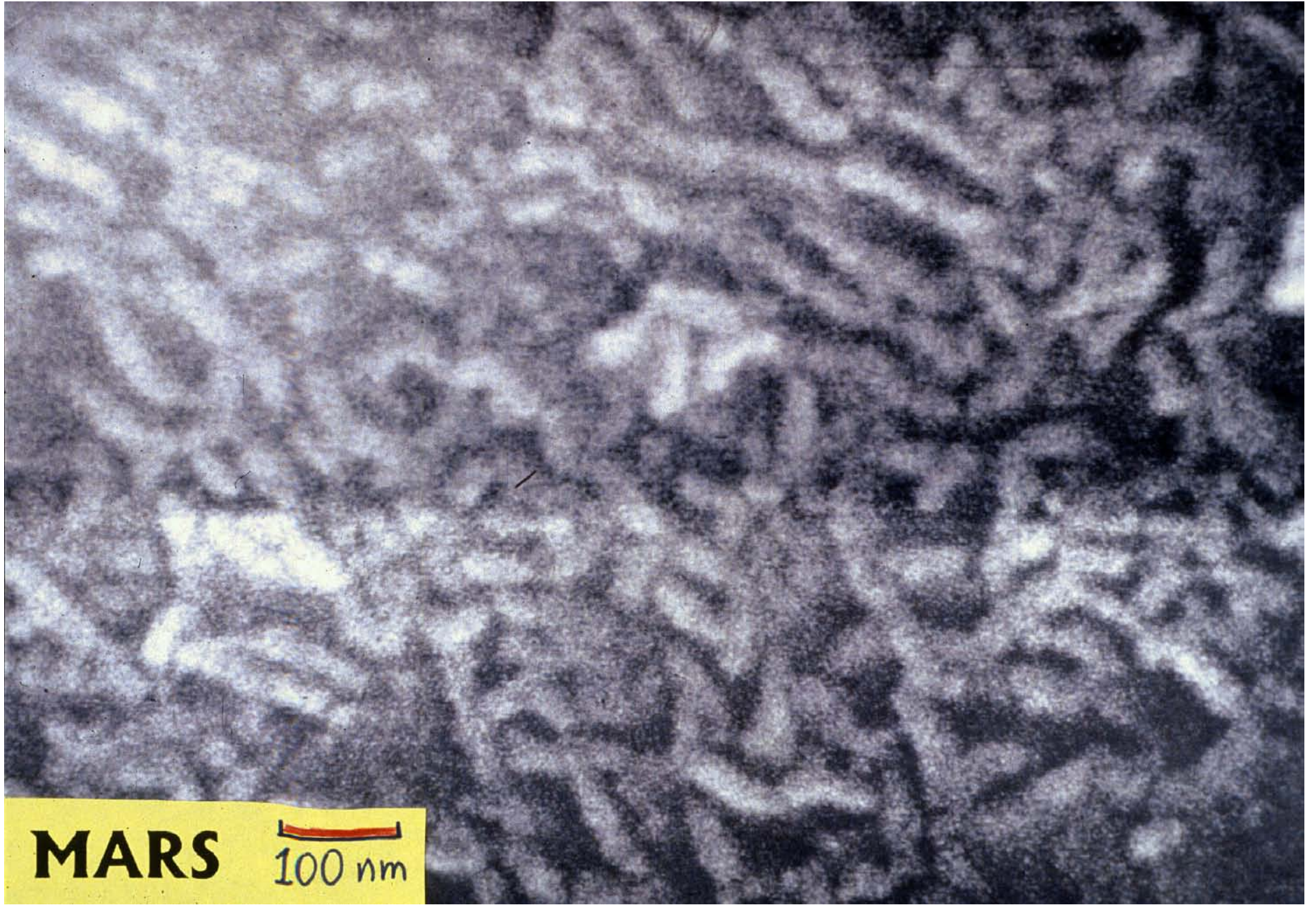
**VULCANO, Sicily**

300 nm




**TRAVERTINE, New Mexico  
Fe-bacteria - Etched**

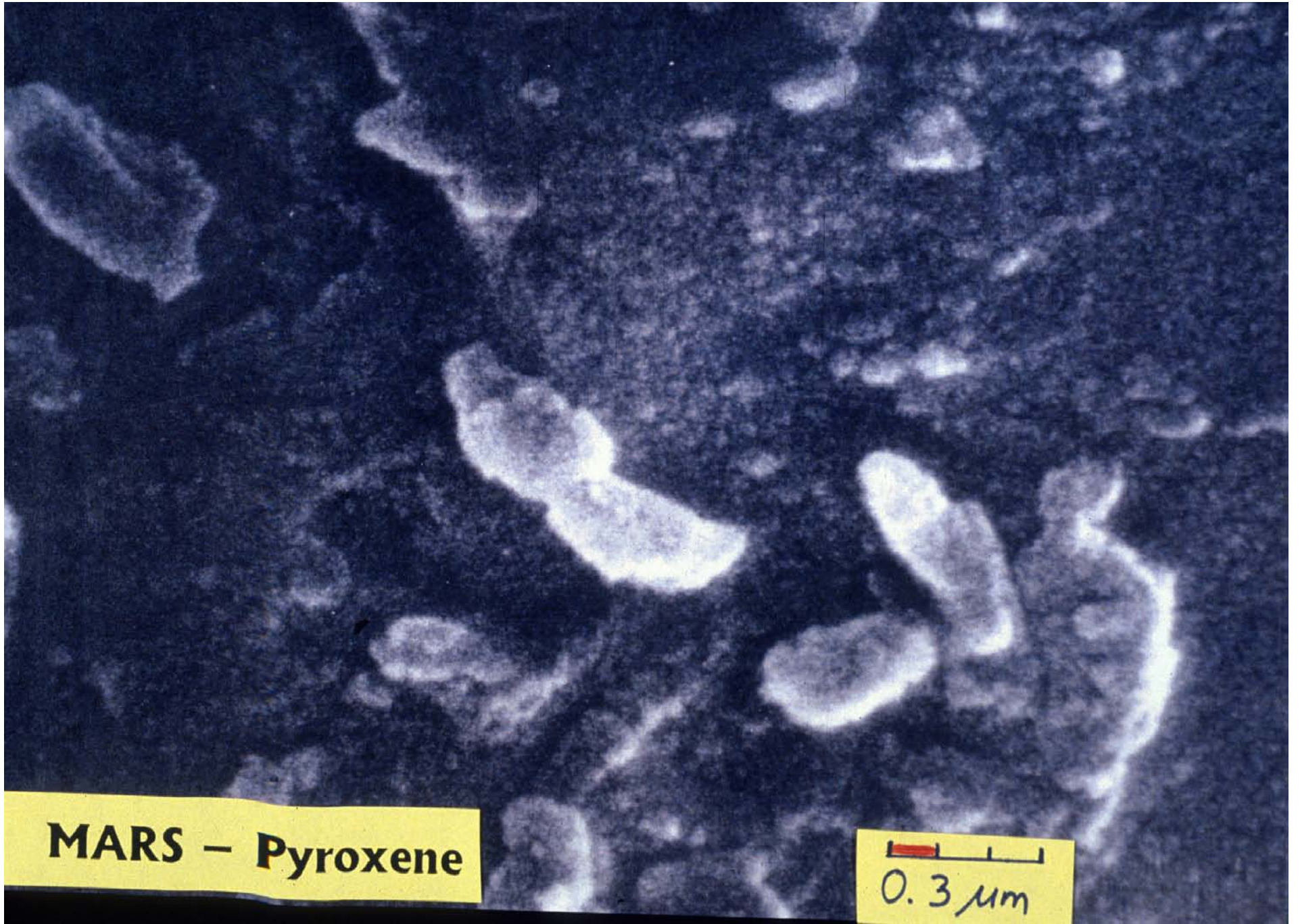
0.1 μm



**MARS**

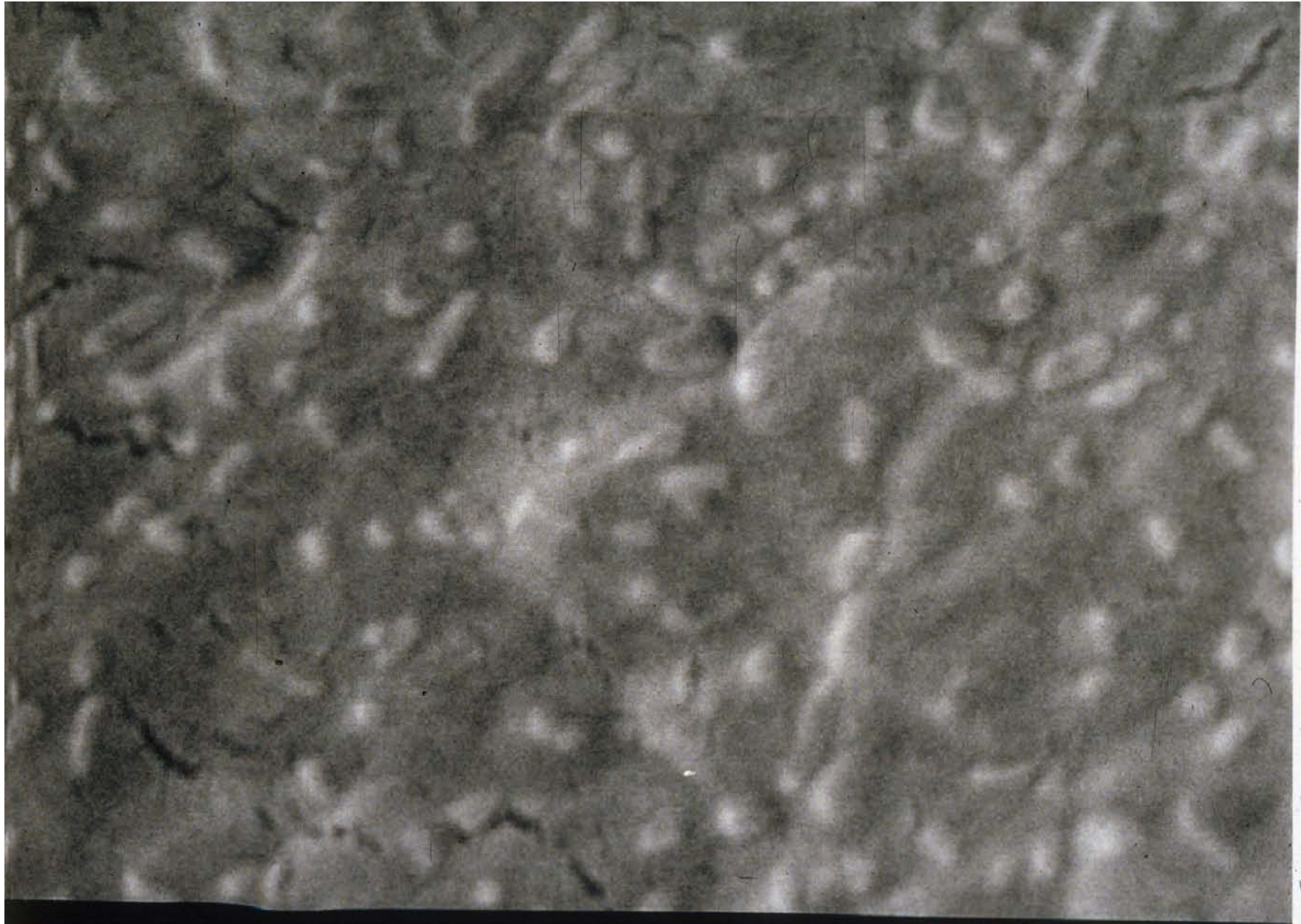
  
100 nm





**MARS - Pyroxene**

0.3 μm



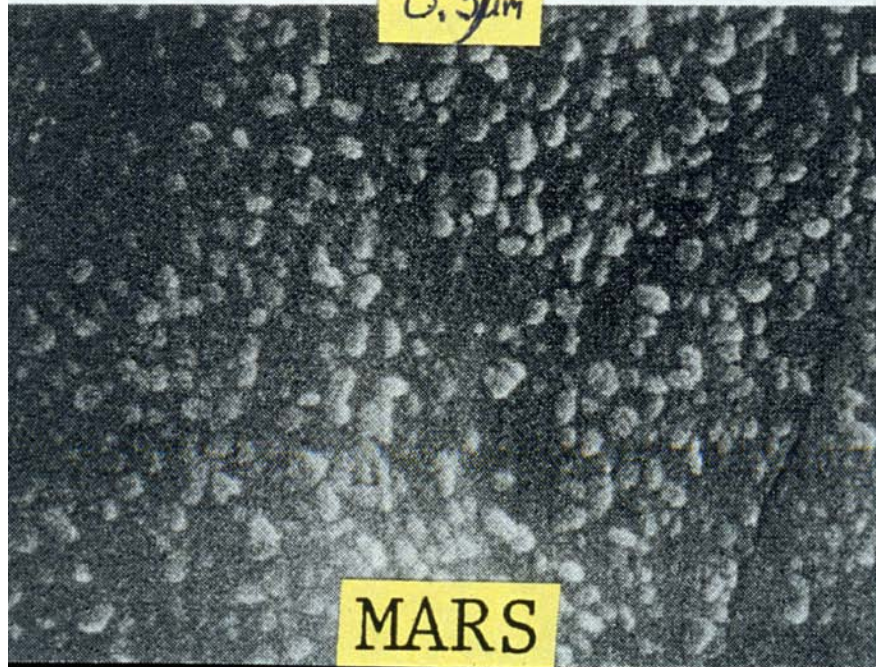
*Iba Pavlova - Cultured Eastern Springs Water*

600nm 50000X

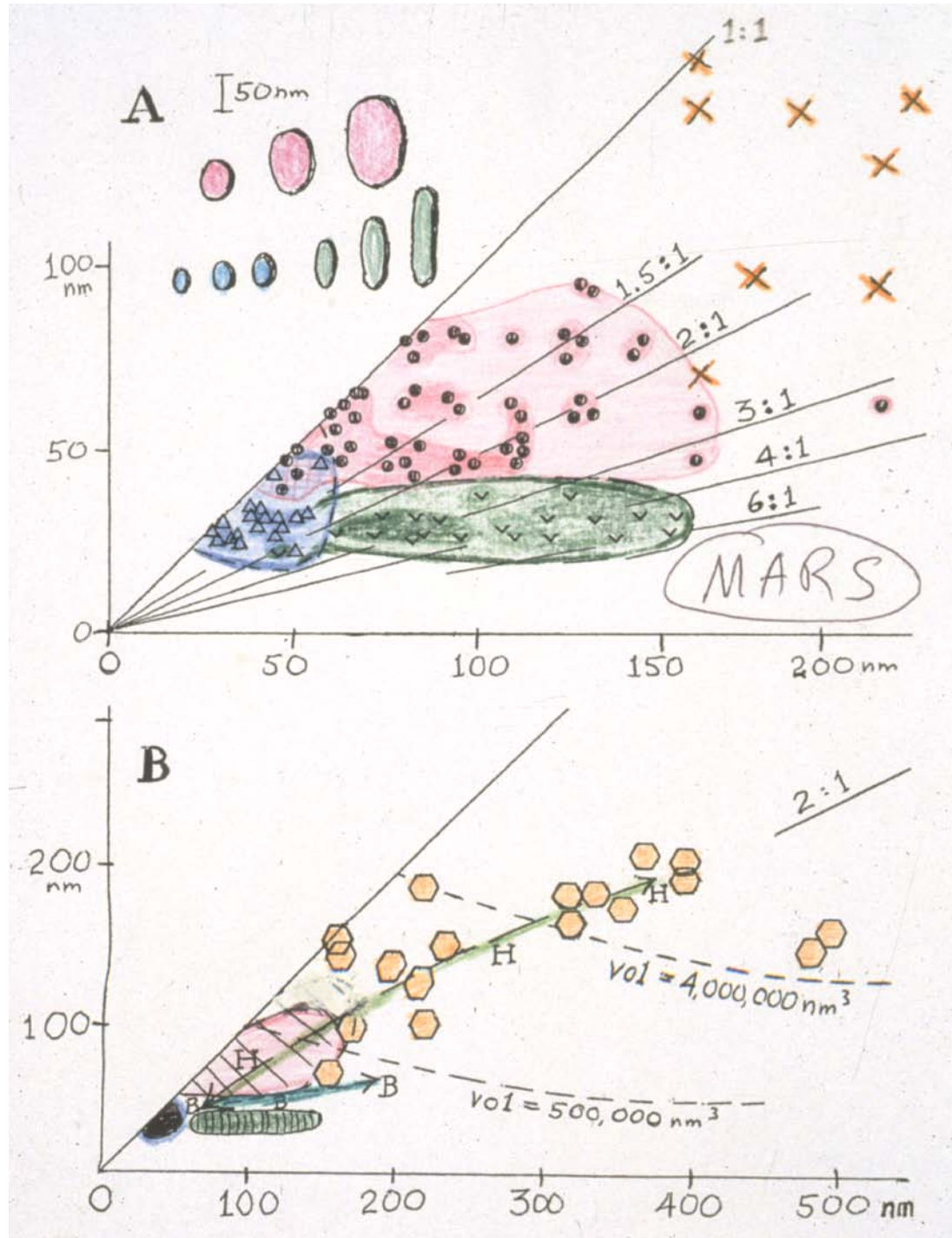
CULTURE



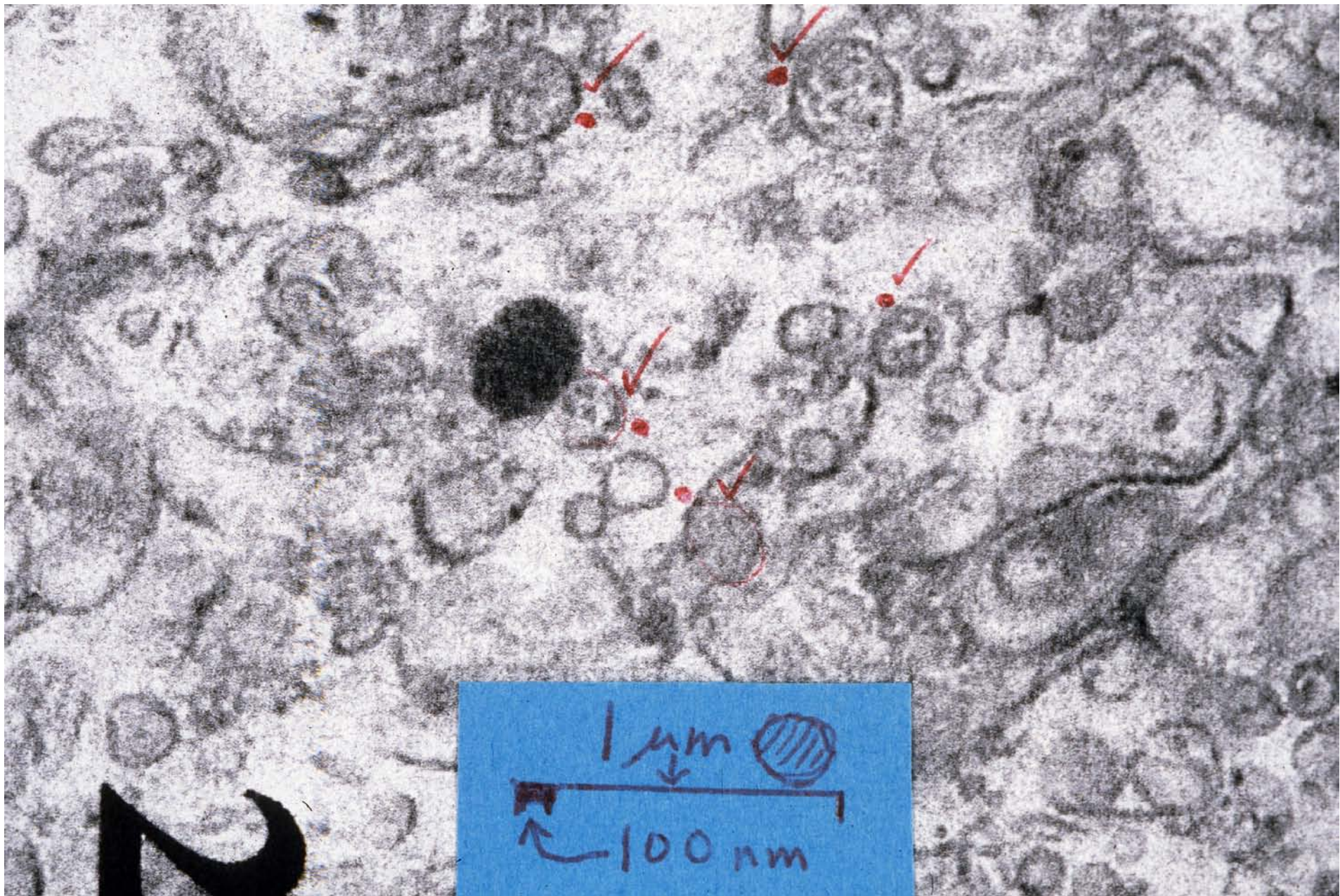
0.3µm



MARS

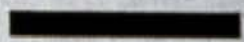
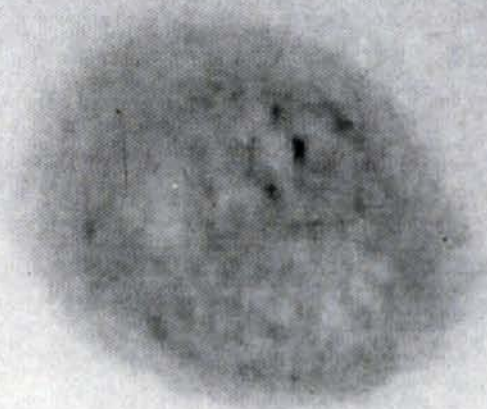






300 nm





0.11  $\mu\text{m}$

VITERBO sample of Folk + Stern '05

TEM - green slime by Dr. B. KIRKLAND

@ Miss. State U. IV.05



