

The Impact of Minor Mergers

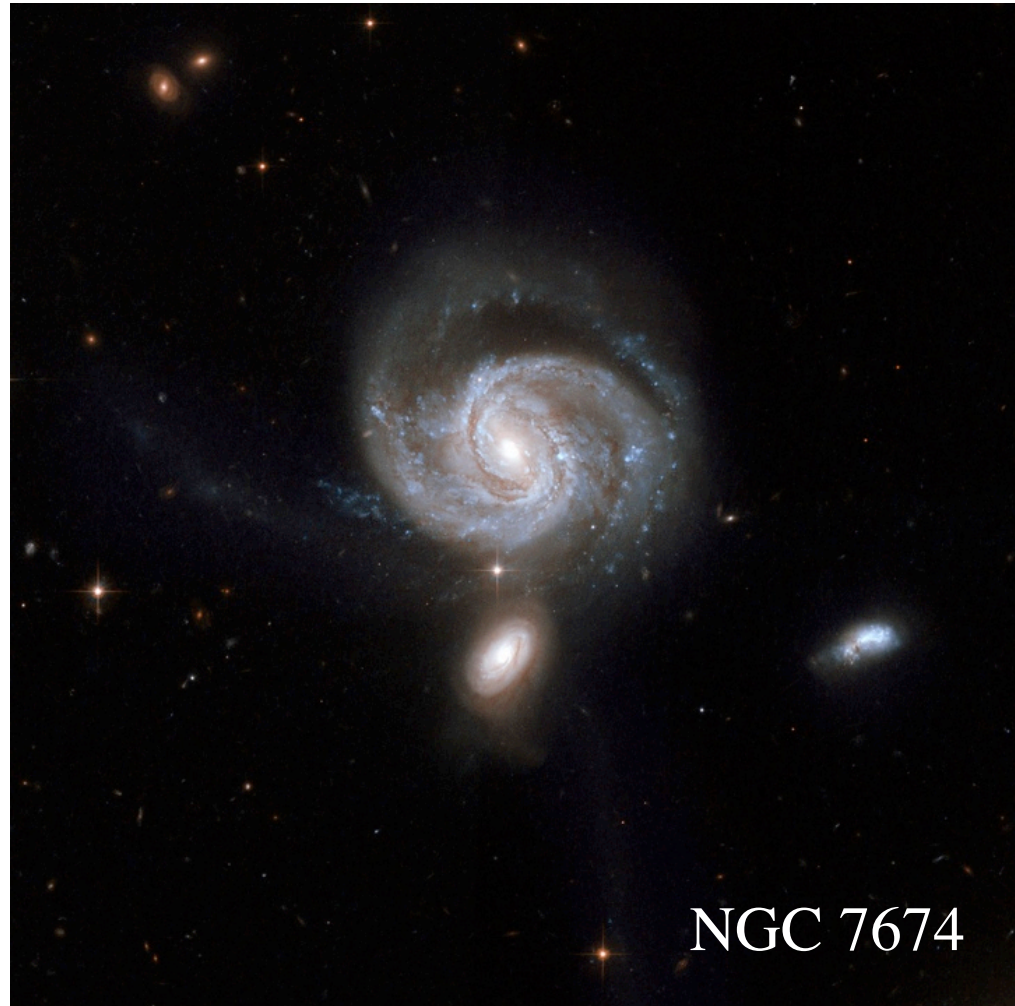
T. J. Cox (CfA)

Phil Hopkins (Berkeley)

Lars Hernquist (CfA)

Rachel Somerville (STScI)

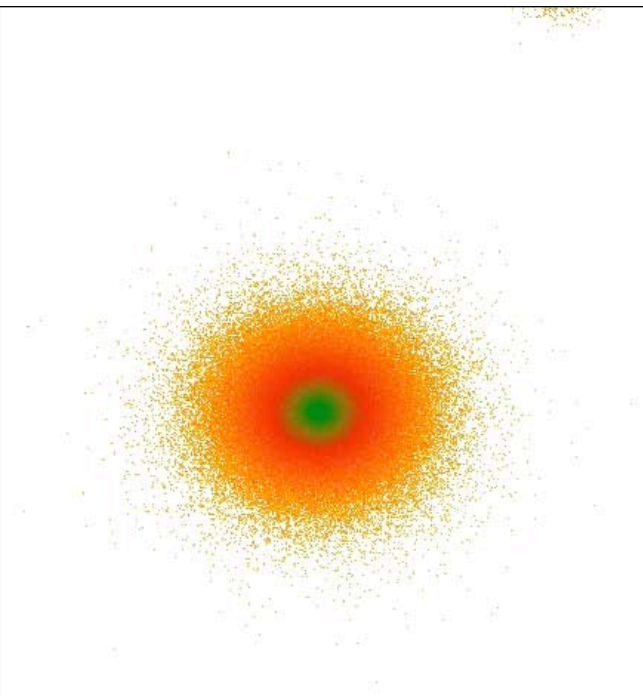
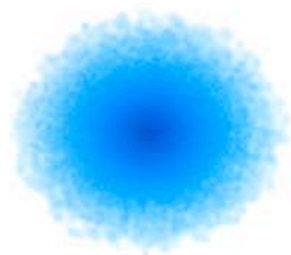
Josh Younger (CfA)



Gurtina Besla (CfA), Avishai Dekel (HU), Tiziana Di Matteo (CMU), Suvendra Dutta (CfA), Chris Hayward (CfA), Loren Hoffman (CfA), Patrik Jonsson (UCSC), Dusan Keres (CfA), Yuexing Li (CfA), Desika Narayanan (Arizona), Greg Novak (UCSC), Joel Primack (UCSC), Brant Robertson (KICP), Volker Springel (MPA)

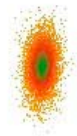
1:8
Minor
Merger

0.00



blue=
projected gas
density

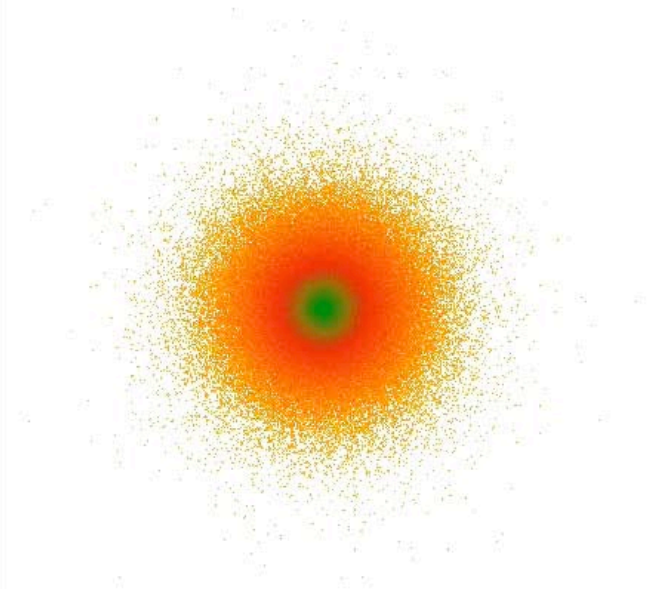
color=
projected stellar
density



0.00

1:8 Minor Merger

(retrograde
version of
previous
encounter)



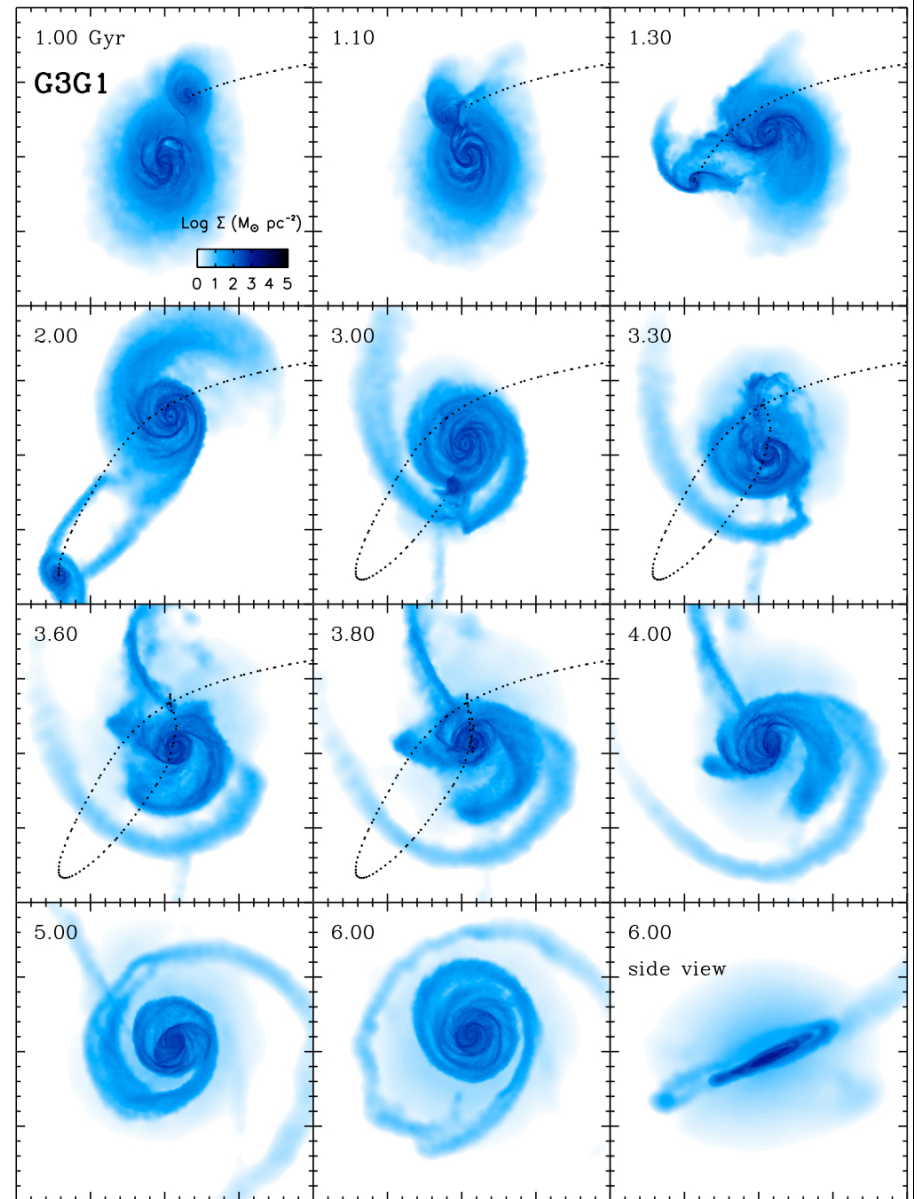
blue=
projected gas
density

color=
projected stellar
density



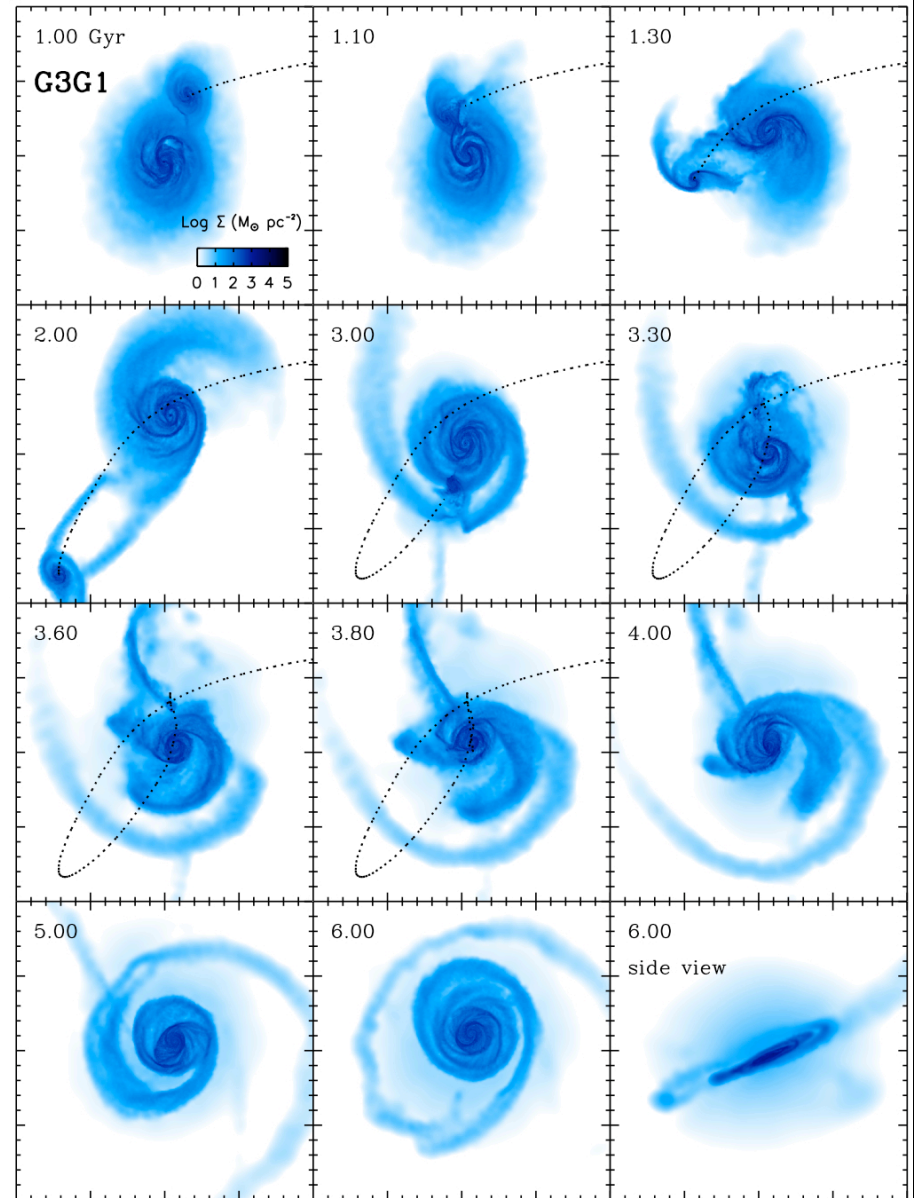
Galaxy Mergers Simulations

- Simulations: 3-D, time-dependence using GADGET2
- Include
 - Springel & Hernquist “conservative-entropy” SPH
 - Star formation (sub-resolution)
 - Supernova feedback (sub-resolution)
 - (optionally) supernova-driven winds (sub-resolution)
 - Black hole growth, feedback (sub-resolution)
- Consider:
 - Binary mergers
 - varying mass ratios
 - Galaxy models motivated by local galaxies
 - large gas fractions: made possible by the treatment of SN feedback



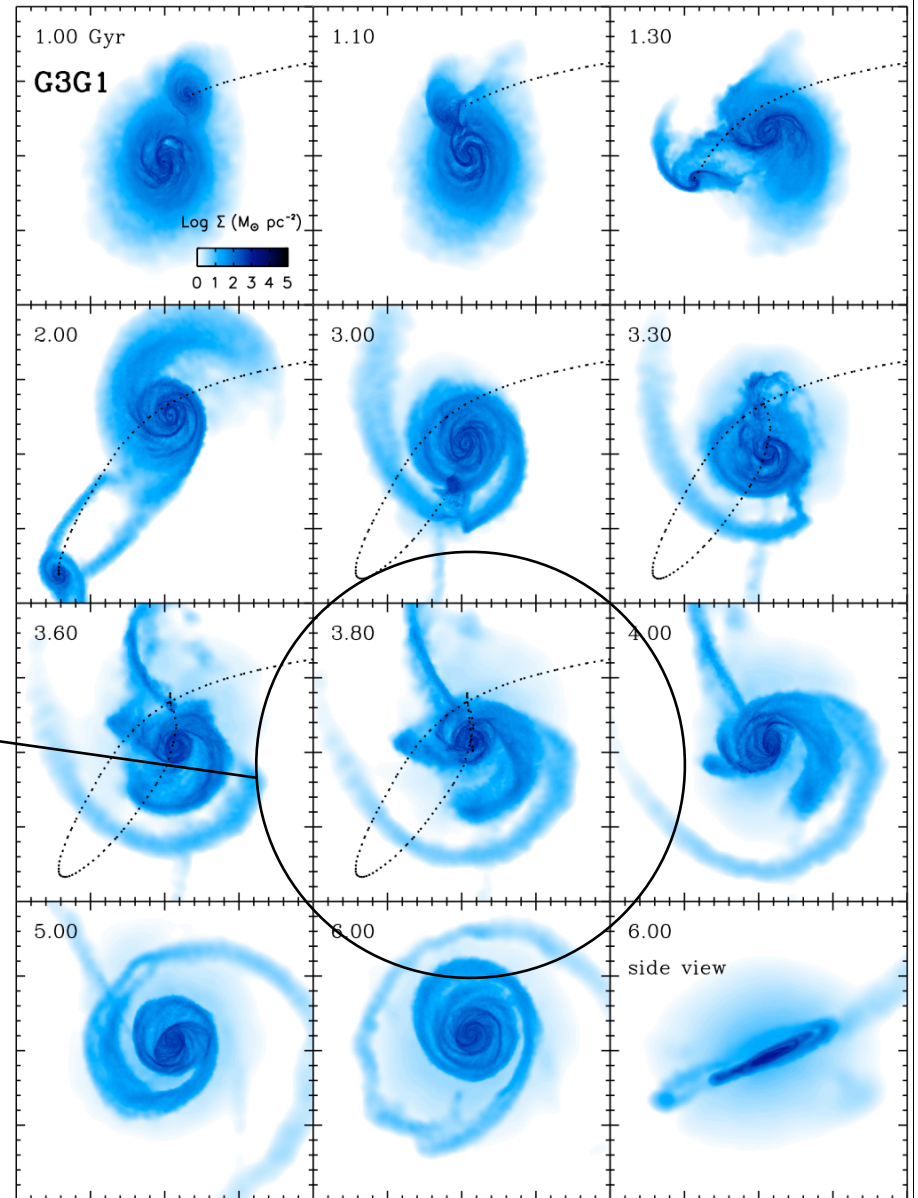
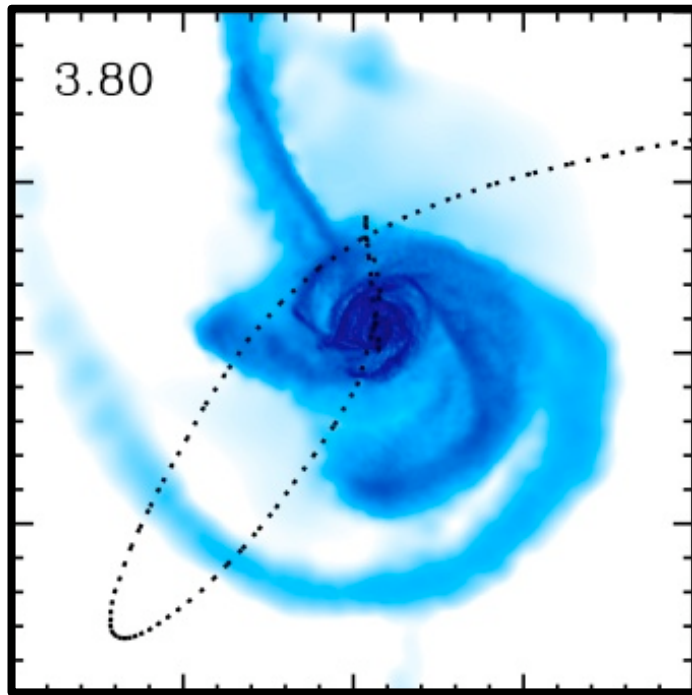
Impact of Minor Mergers

- Star formation
- Properties of merger remnants and implications for bulge formation and for the heating and survivability of galactic disks



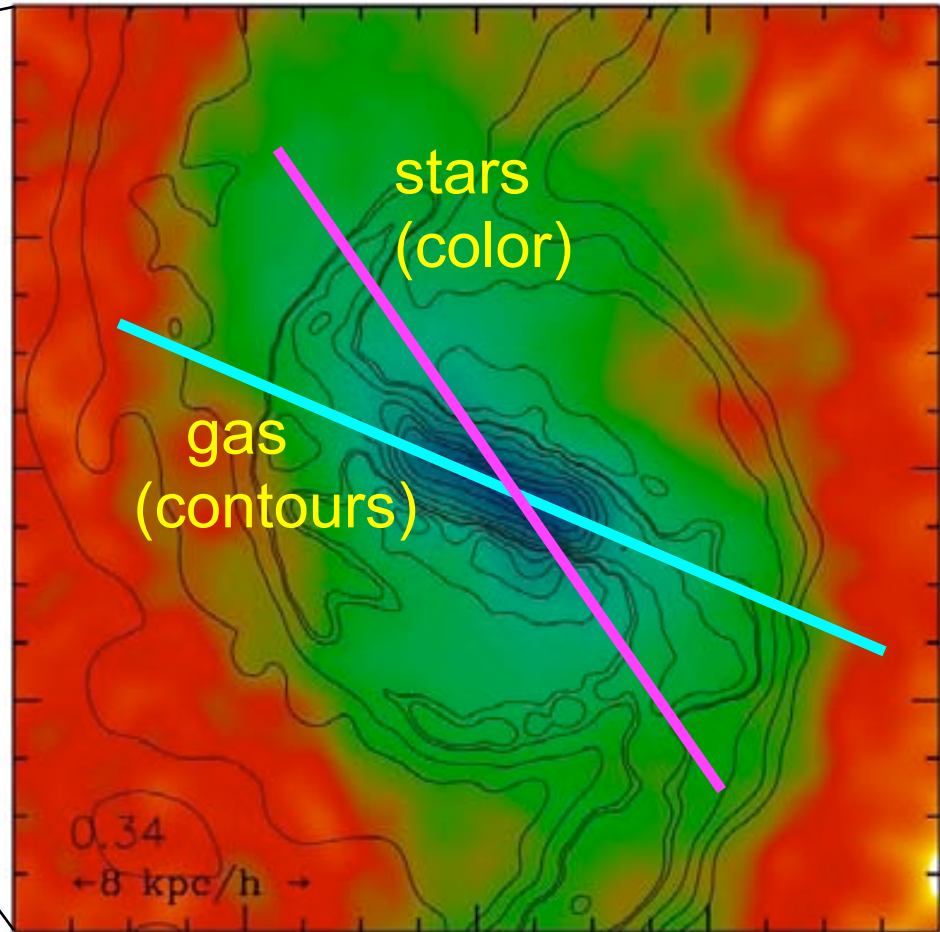
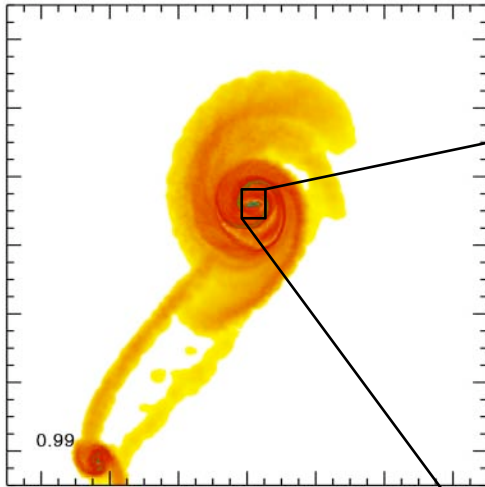
Star Formation

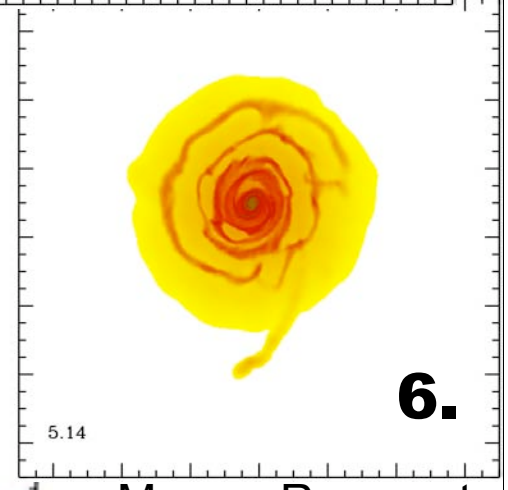
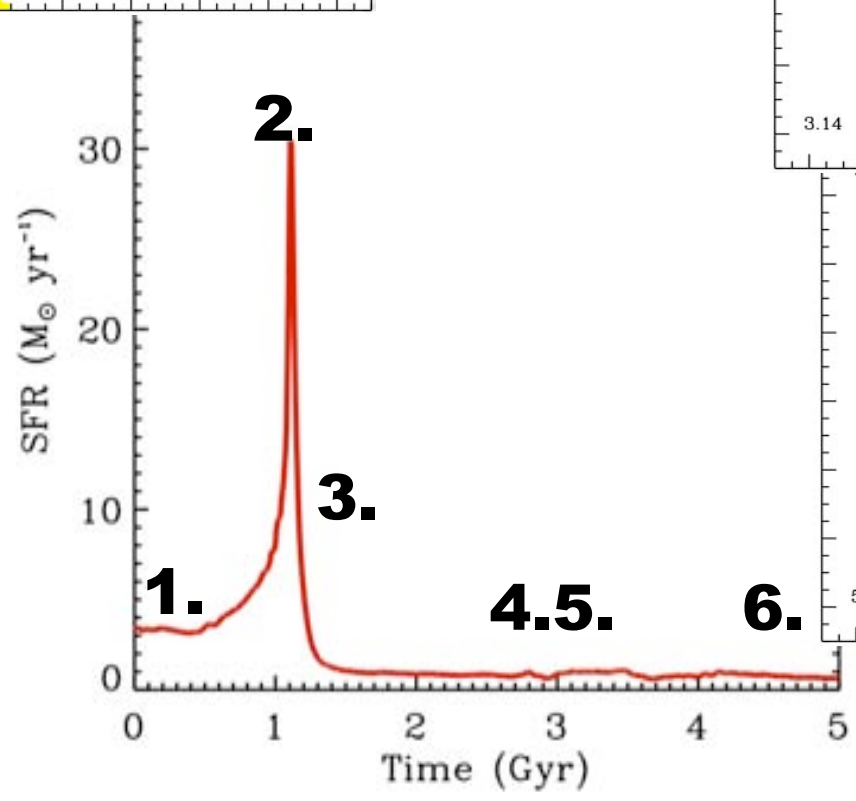
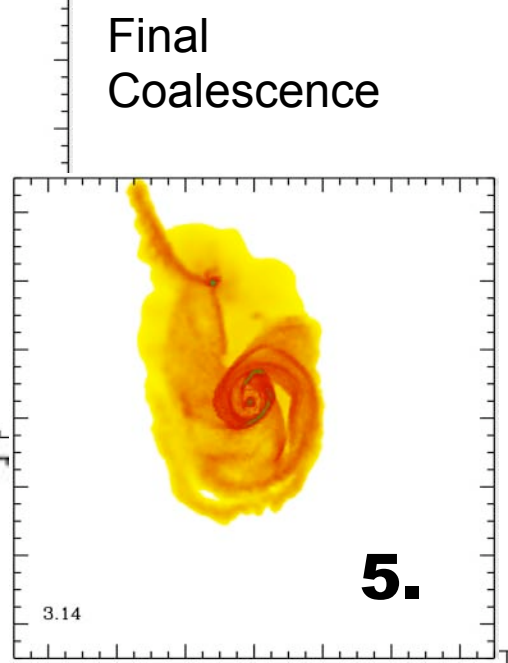
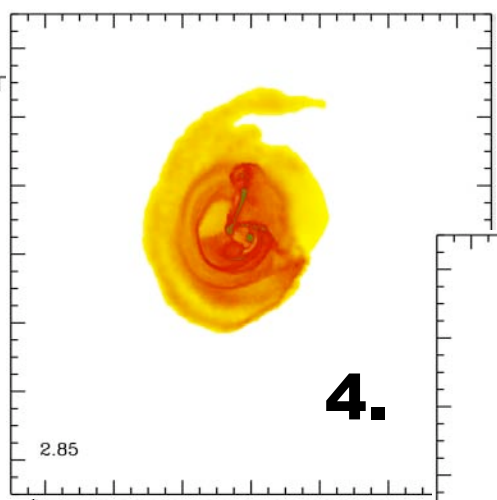
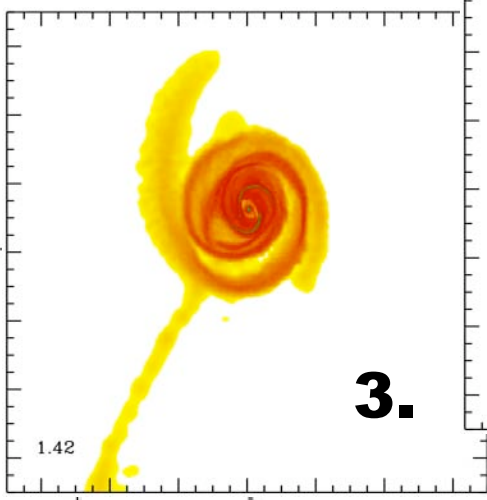
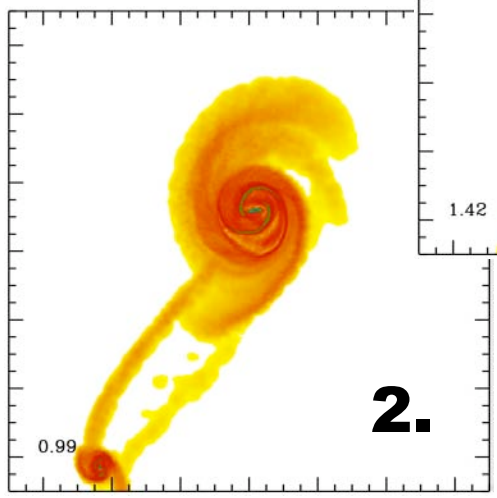
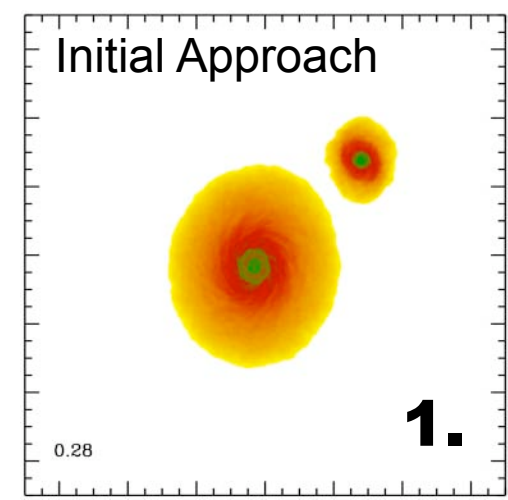
Orbit become radial during late stages of merger



Star Formation

companions -- bars -- gas/star offset -- torques --
gas inflow (see, e.g., Barnes 92, Barnes & Hernquist 96, Mihos &
Hernquist 94,96)





Merger Remnant

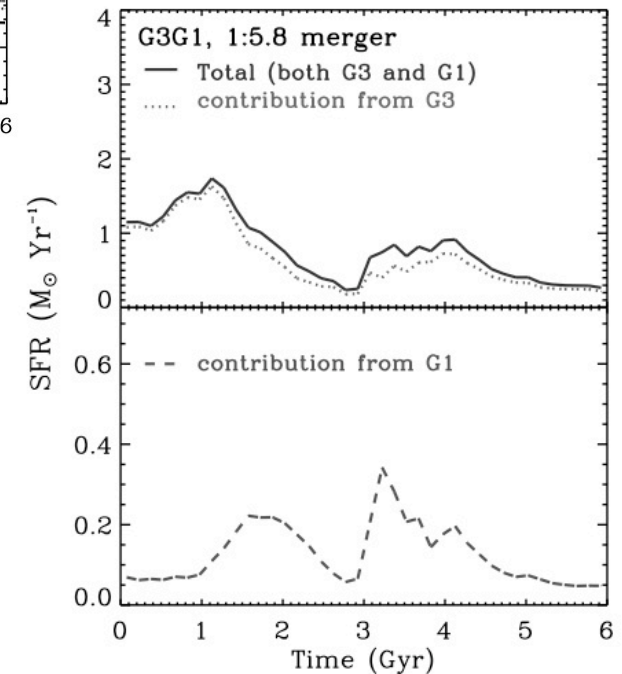
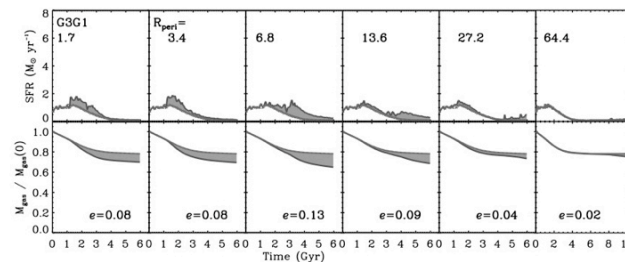
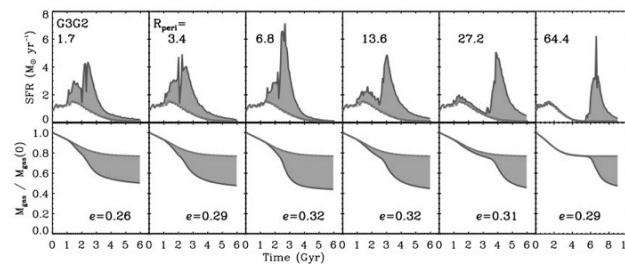
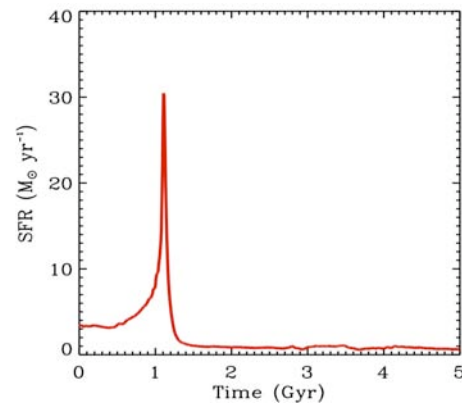
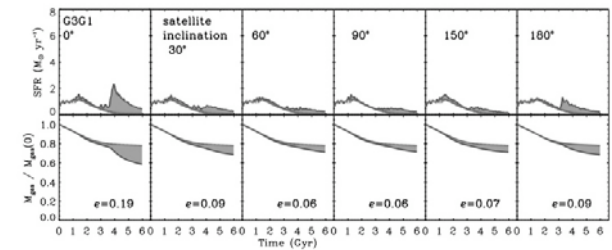
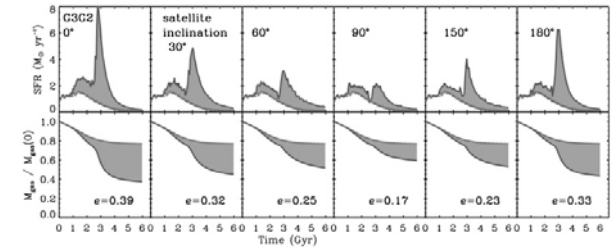
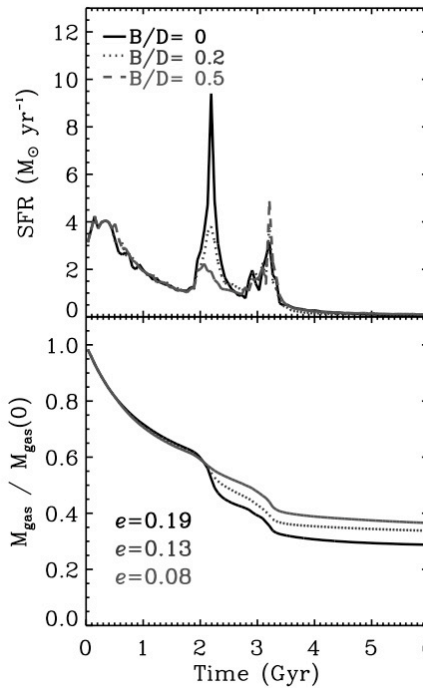
Star Formation

* Starbursts are produced by close tidal passages

* Depend on “everything” -orbit, orientation, disk structure, etc. (our results are fully consistent with Mihos & Hernquist 1994, and moderately consistent with Di Matteo et al. 2007)

* Very little, if any, star formation induced for minor mergers below ~1:10

* Global SF dominated by primary (satellite may also experience a starburst)



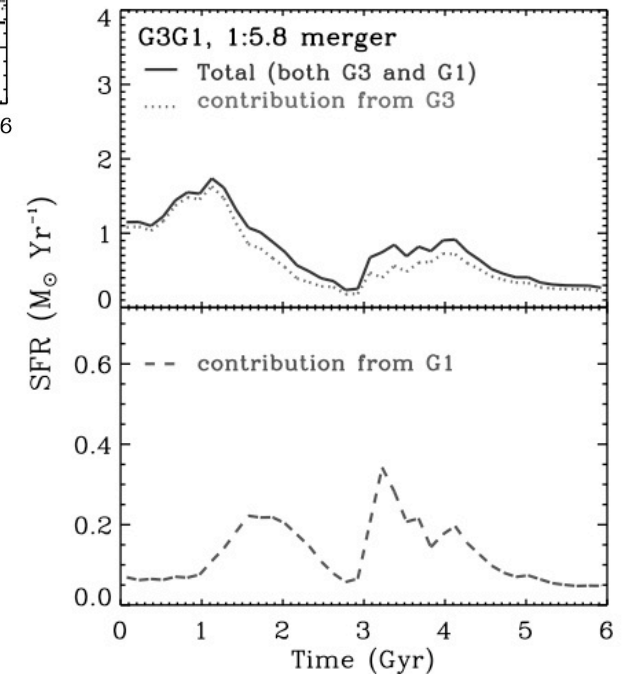
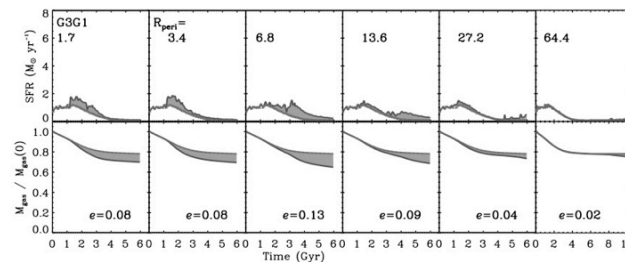
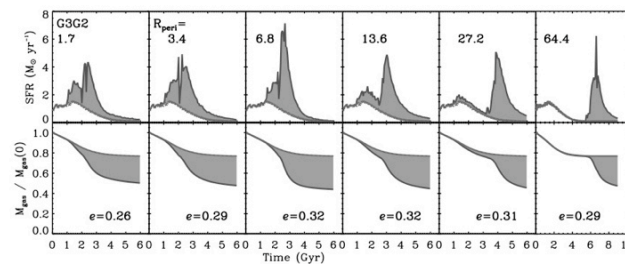
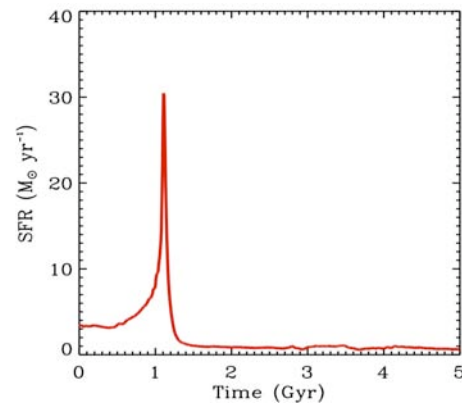
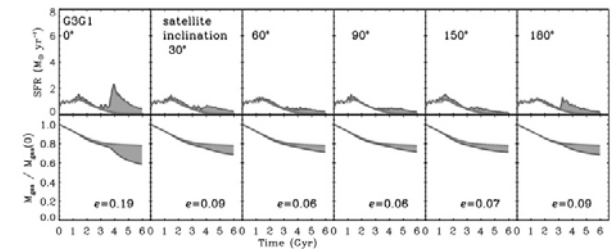
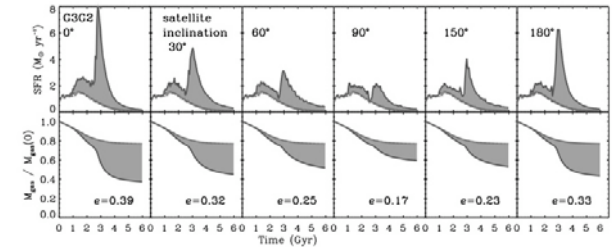
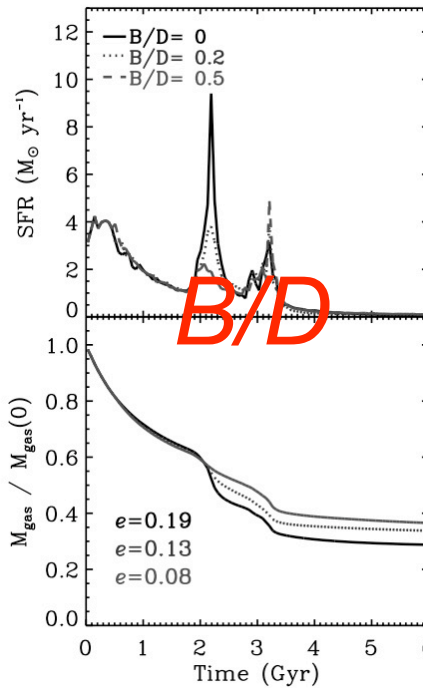
Star Formation

* Starbursts are produced by close tidal passages

* Depend on “everything” -orbit, orientation, disk structure, etc. (our results are fully consistent with Mihos & Hernquist 1994, and moderately consistent with Di Matteo et al. 2007)

* Very little, if any, star formation induced for minor mergers below ~1:10

* Global SF dominated by primary (satellite may also experience a starburst)



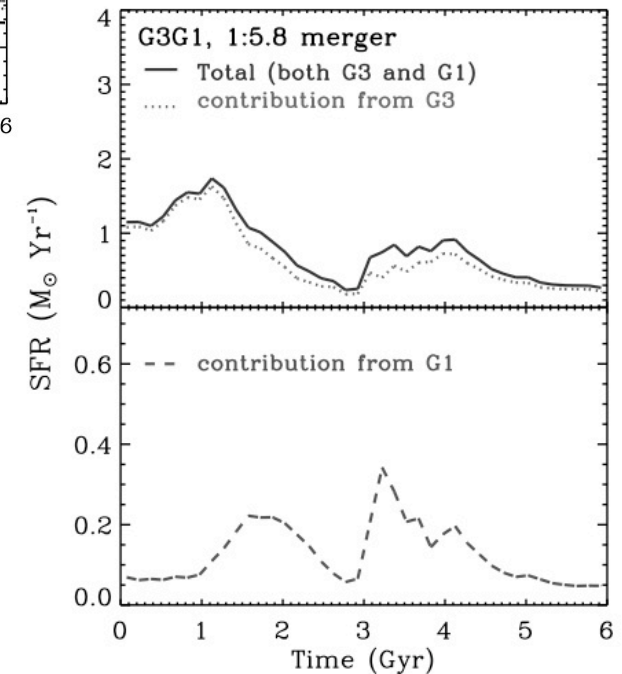
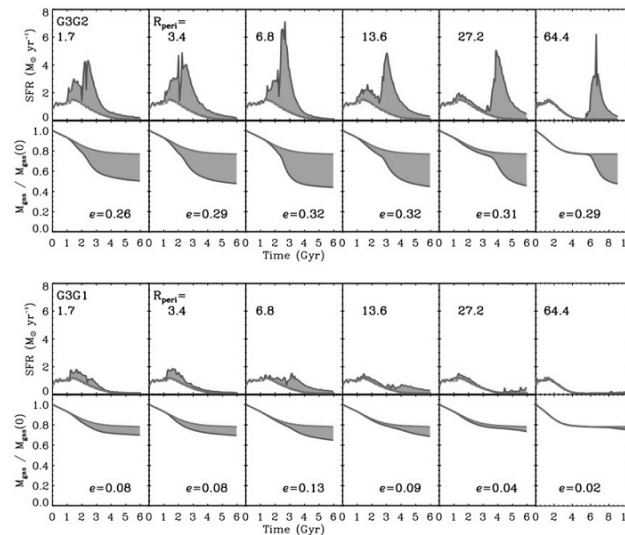
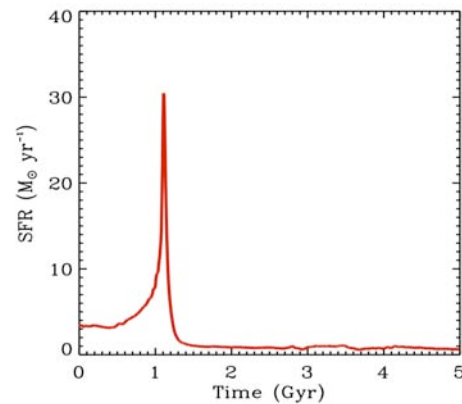
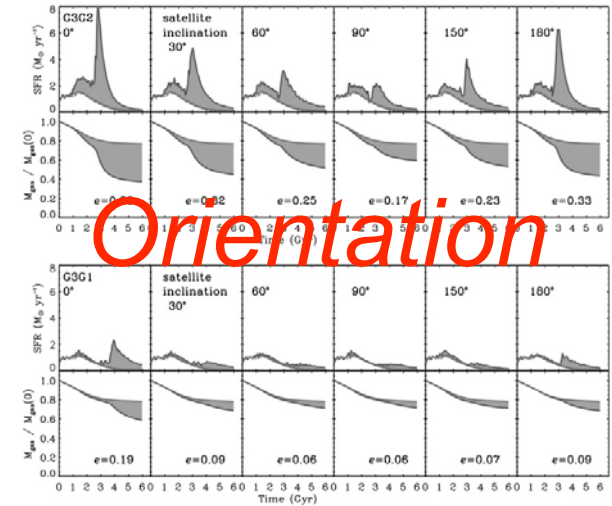
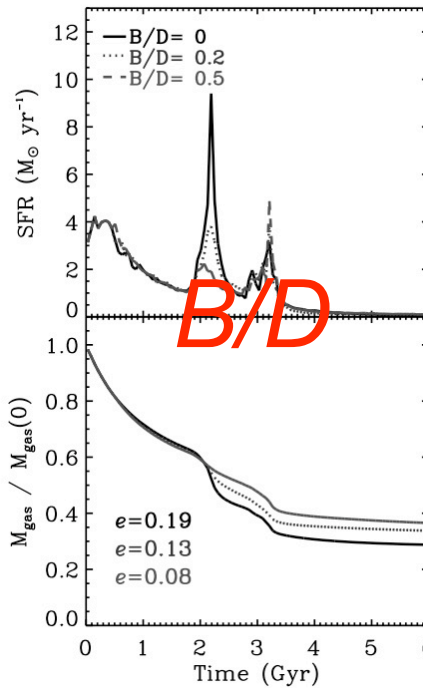
Star Formation

* Starbursts are produced by close tidal passages

* Depend on “everything” -orbit, orientation, disk structure, etc. (our results are fully consistent with Mihos & Hernquist 1994, and moderately consistent with Di Matteo et al. 2007)

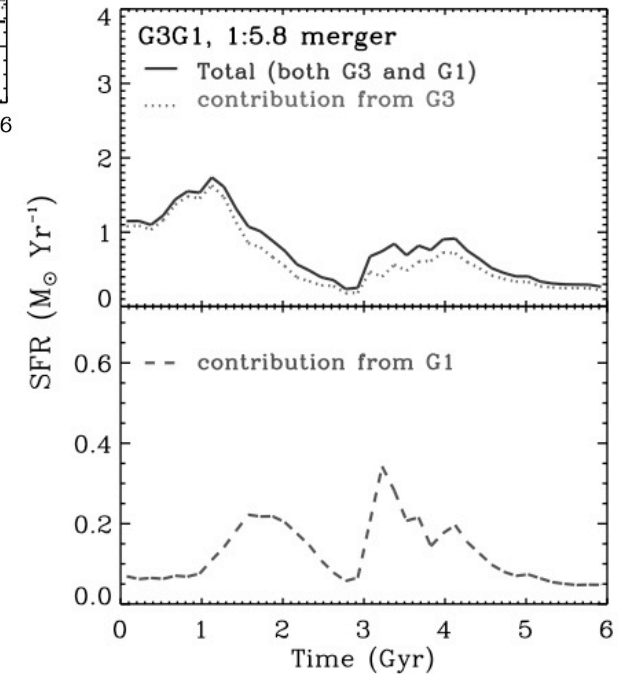
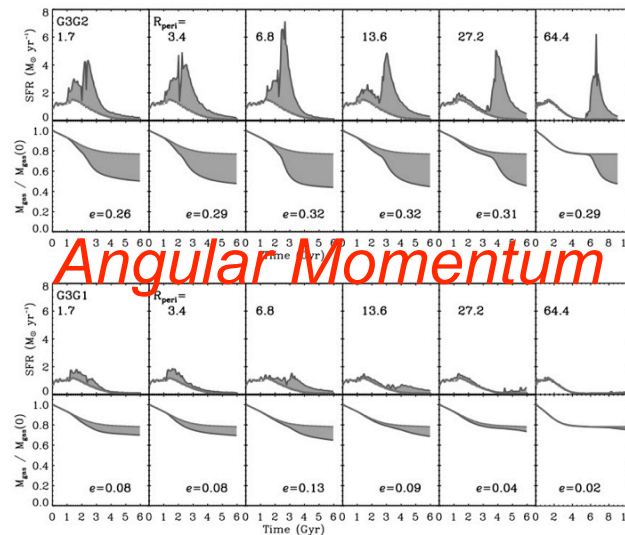
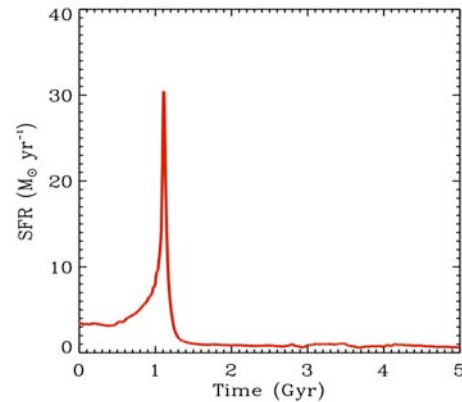
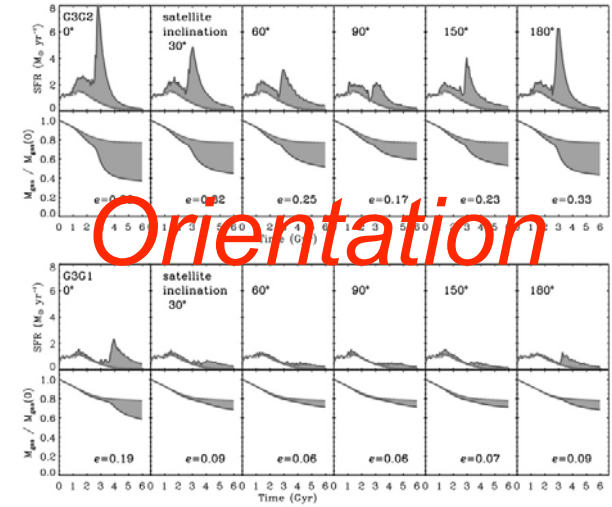
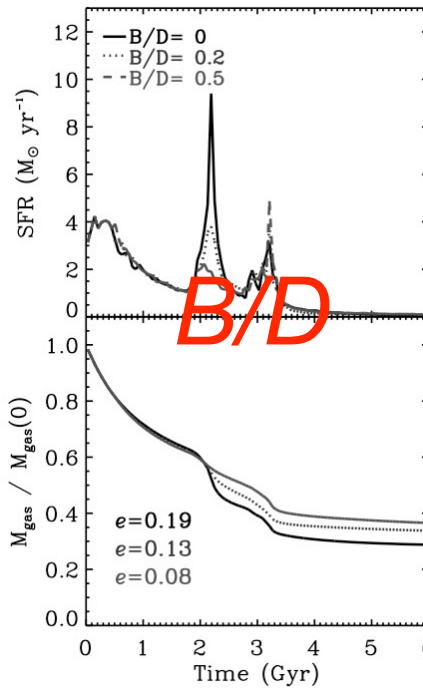
* Very little, if any, star formation induced for minor mergers below ~1:10

* Global SF dominated by primary (satellite may also experience a starburst)



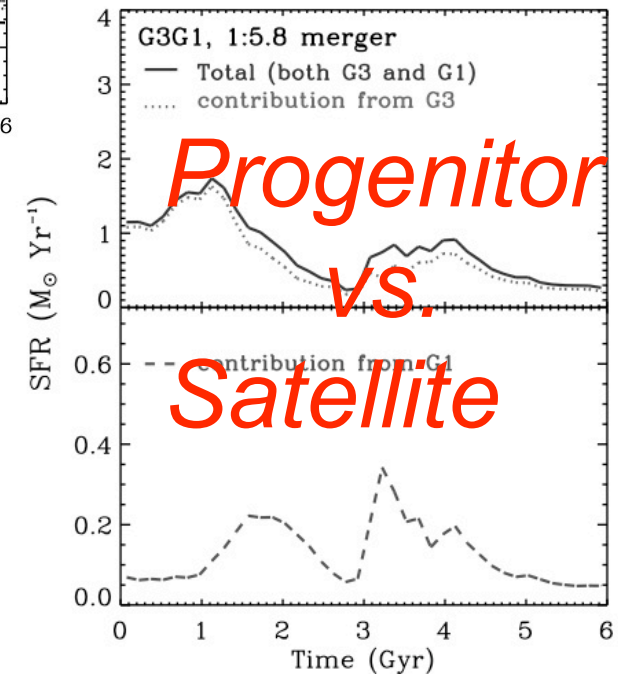
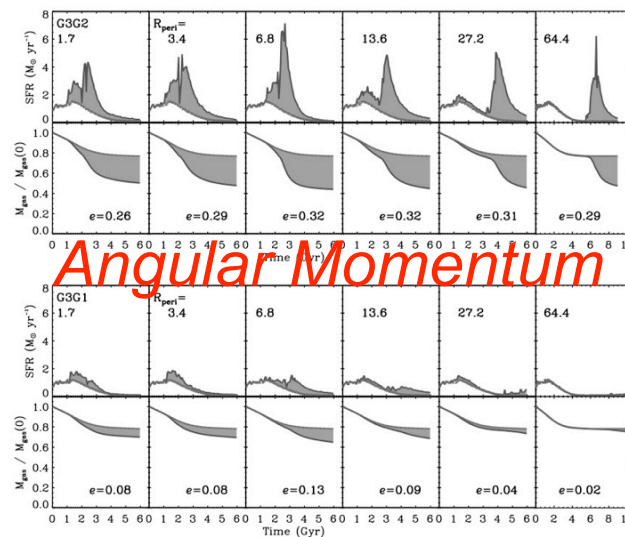
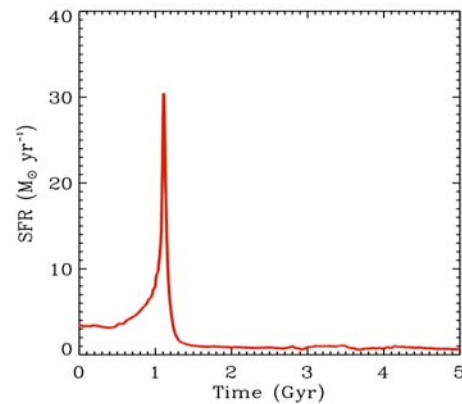
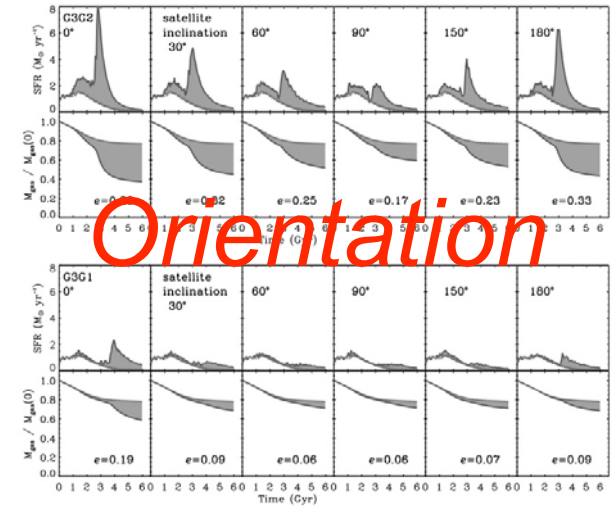
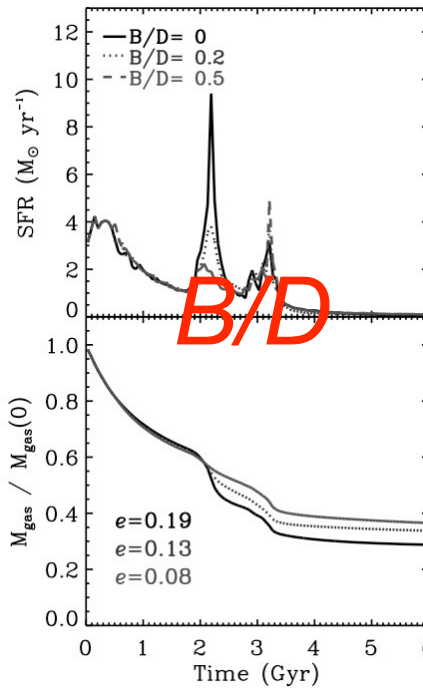
Star Formation

- * Starbursts are produced by close tidal passages
- * Depend on “everything” -orbit, orientation, disk structure, etc. (our results are fully consistent with Mihos & Hernquist 1994, and moderately consistent with Di Matteo et al. 2007)
- * Very little, if any, star formation induced for minor mergers below ~1:10
- * Global SF dominated by primary (satellite may also experience a starburst)



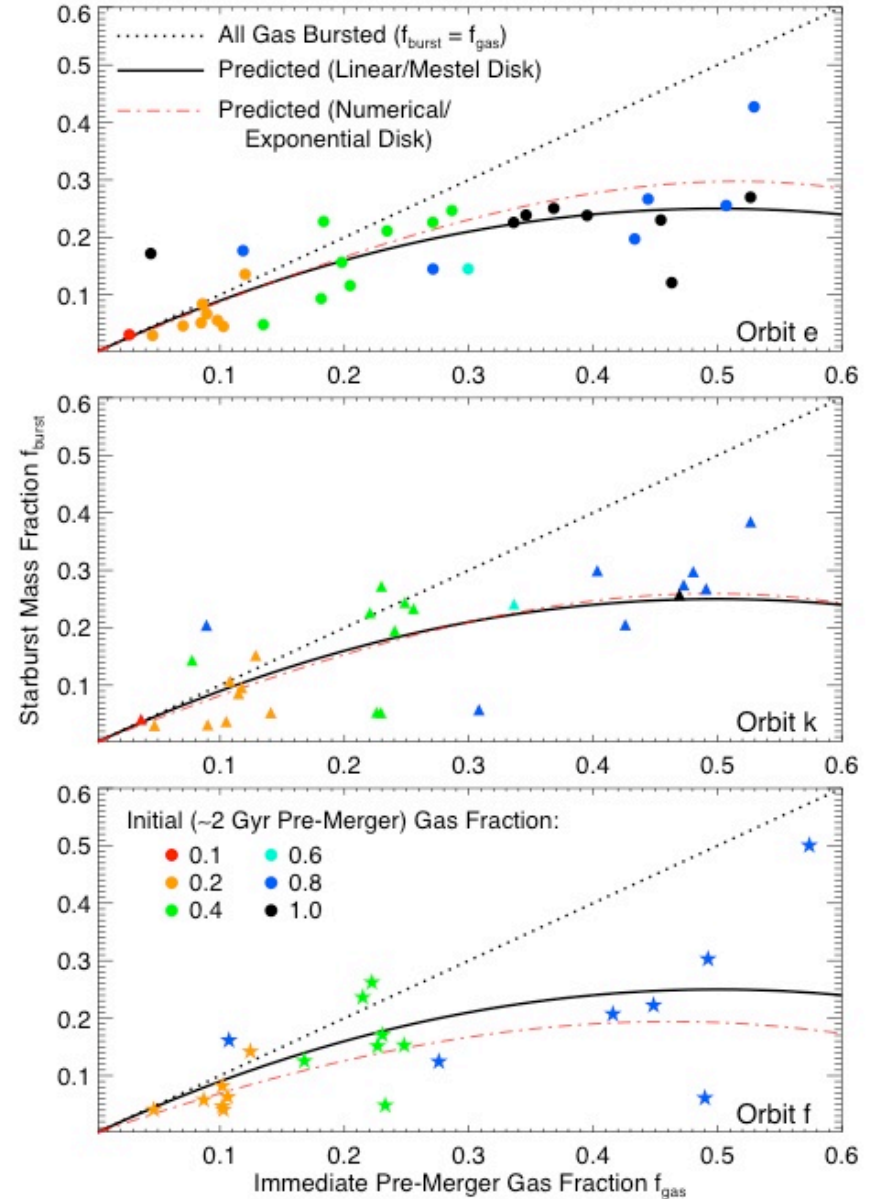
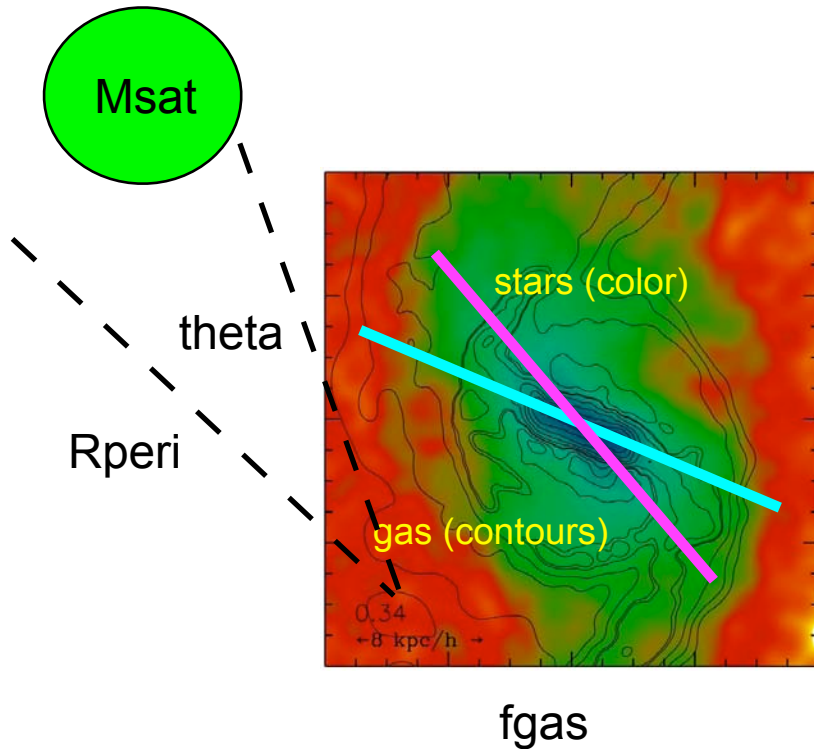
Star Formation

- * Starbursts are produced by close tidal passages
- * Depend on “everything” -orbit, orientation, disk structure, etc. (our results are fully consistent with Mihos & Hernquist 1994, and moderately consistent with Di Matteo et al. 2007)
- * Very little, if any, star formation induced for minor mergers below ~1:10
- * Global SF dominated by primary (satellite may also experience a starburst)

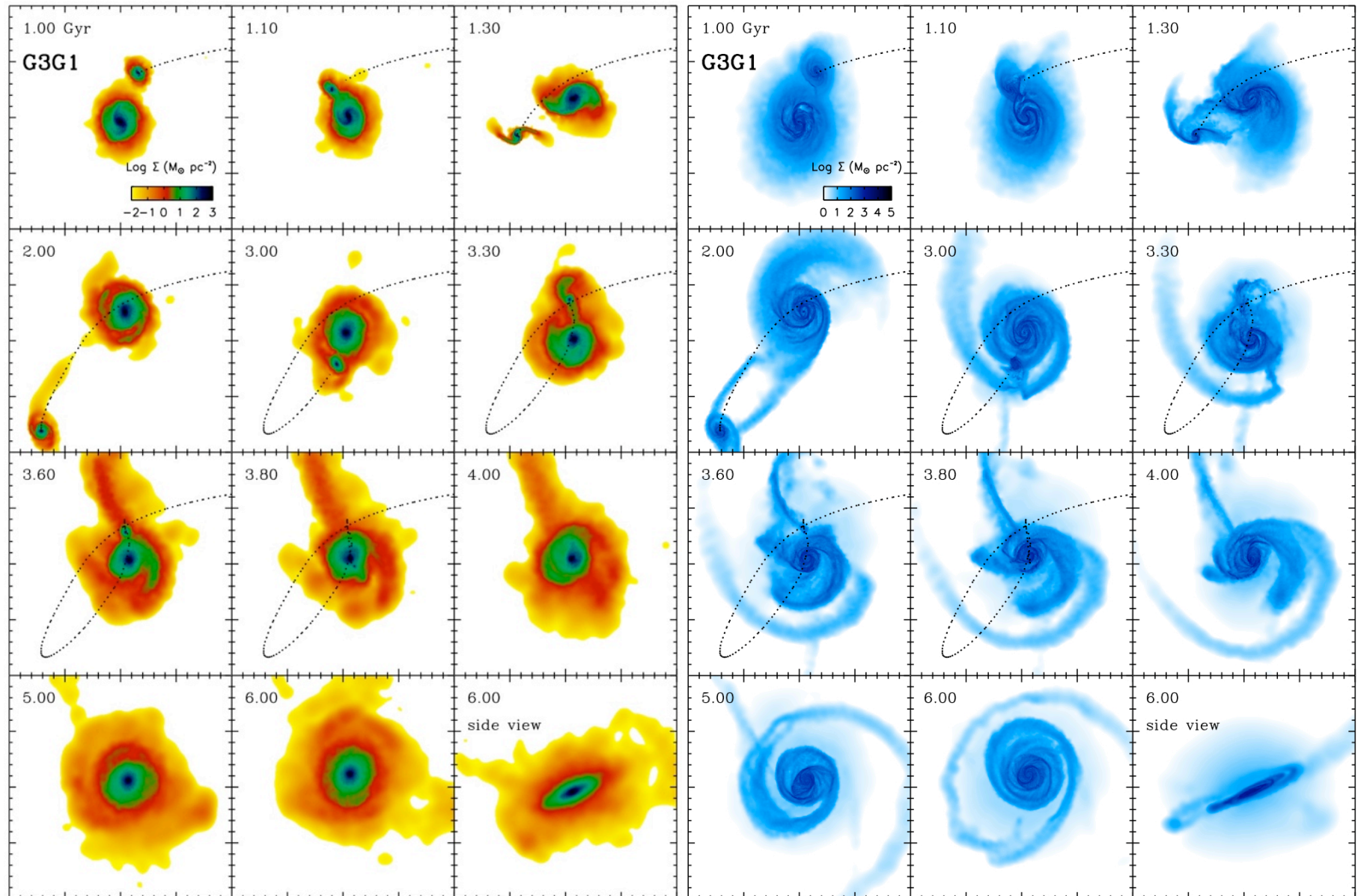


Star Formation

Hopkins et al. (2008) provides physical understanding of burst fraction.

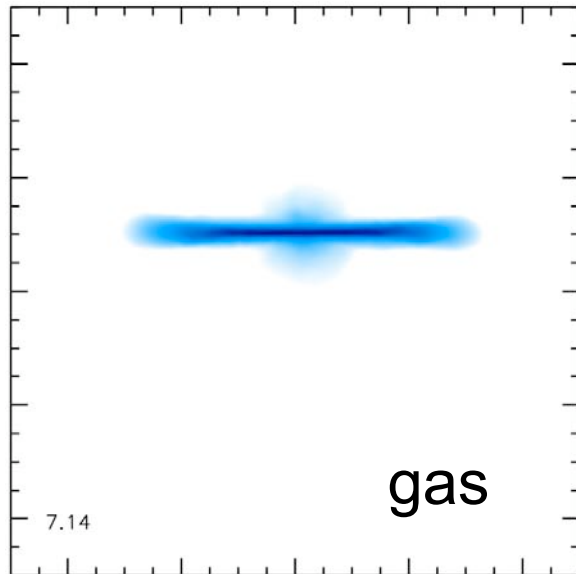
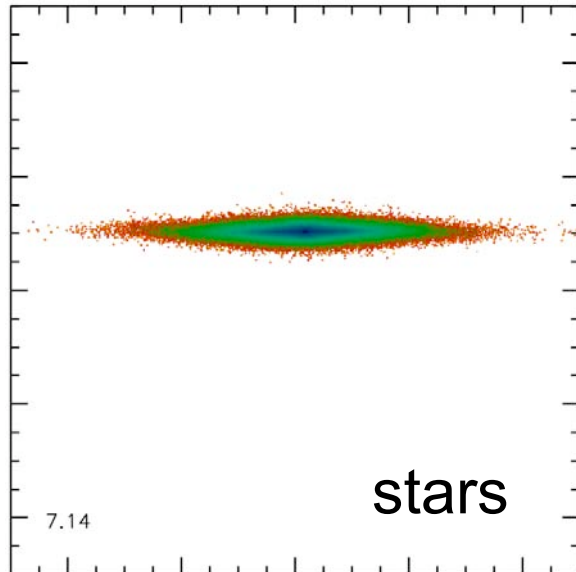


Morphology of Minor Merger Remnants

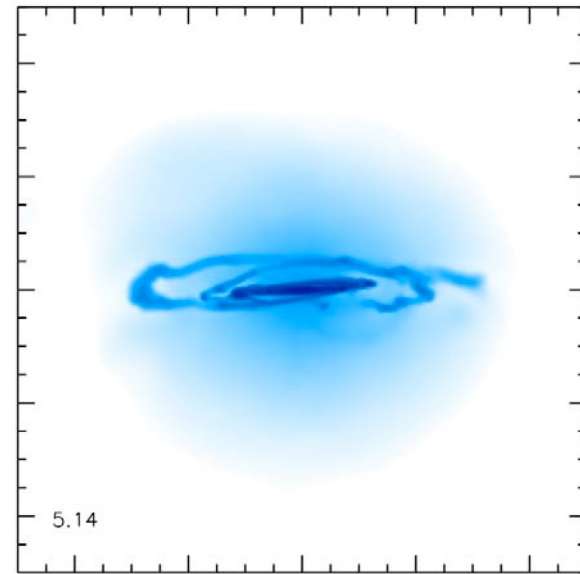
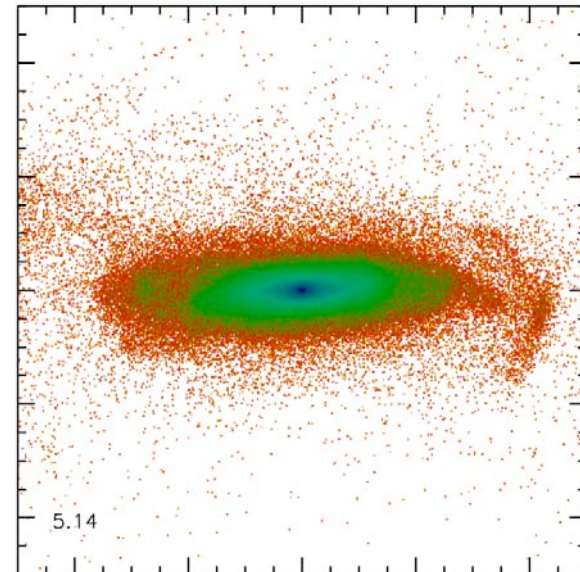


Impact of Minor Mergers

initial

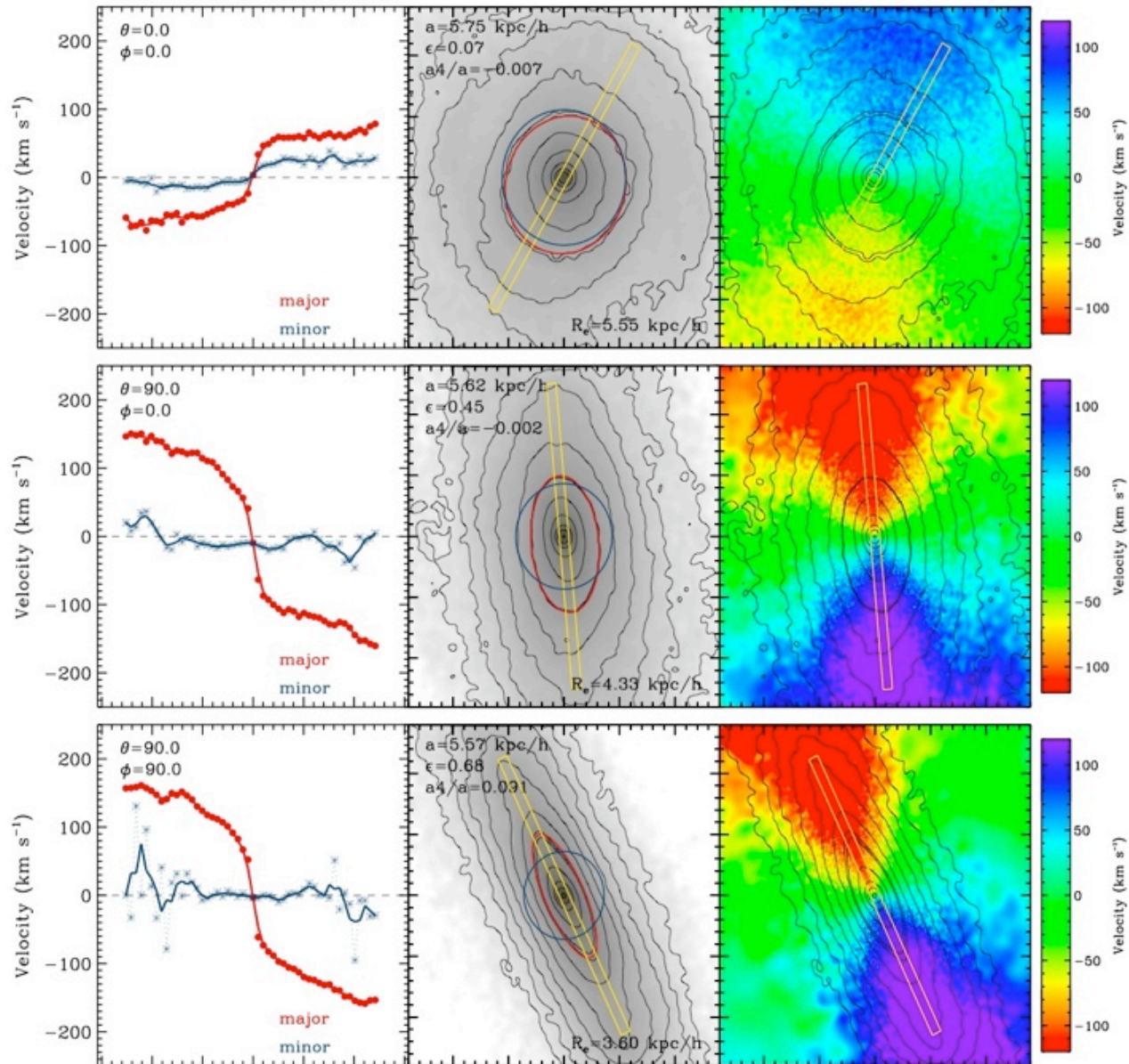


post 1:8 merger



Impact of Minor Mergers

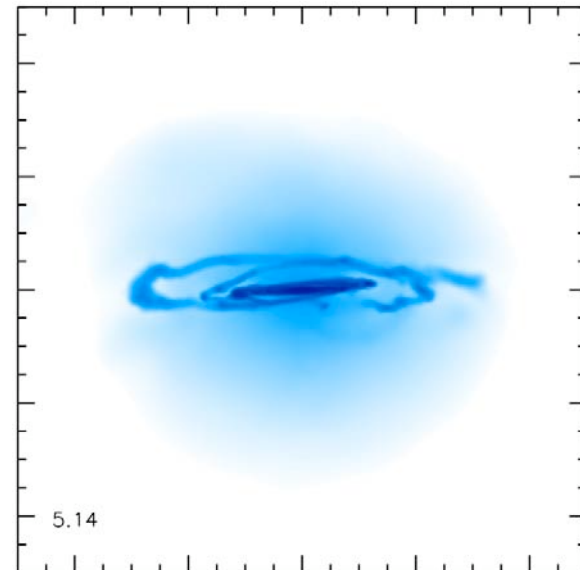
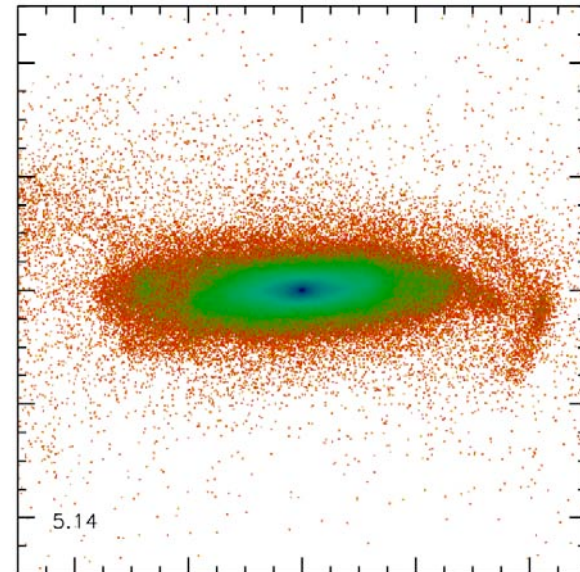
nearly co-planar
(30 deg.), 1:8
remnant viewed
from 3 orthogonal
viewing angles.



Impact of Minor Mergers

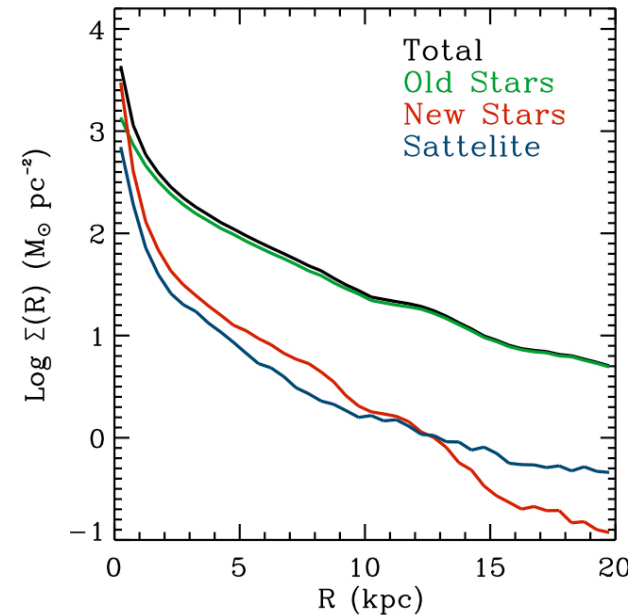
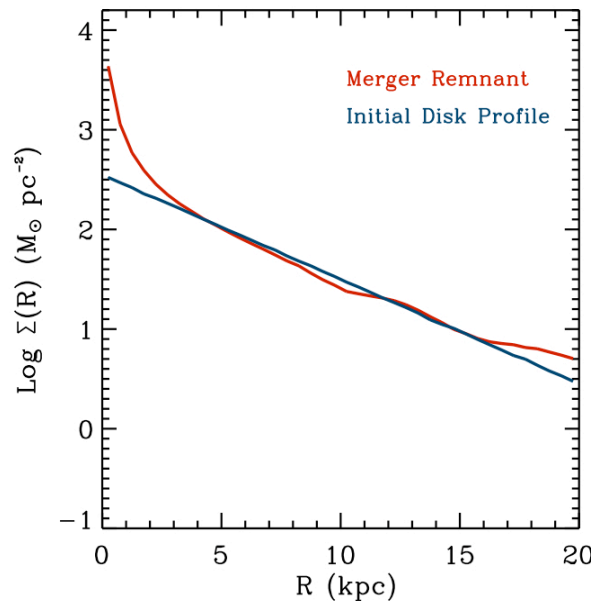
- pronounced “fine” structure, much of which is at large radii (similar to the Monoceros ring? Younger et al. 2008, Kazantzidis et al. 2008)
- bulge-like concentration of stellar mass at remnant center
- stellar disk is thickened and heated
- thin, dynamically cool gaseous disk, with a warm diffuse component

post 1:8 merger



Bulge Formation

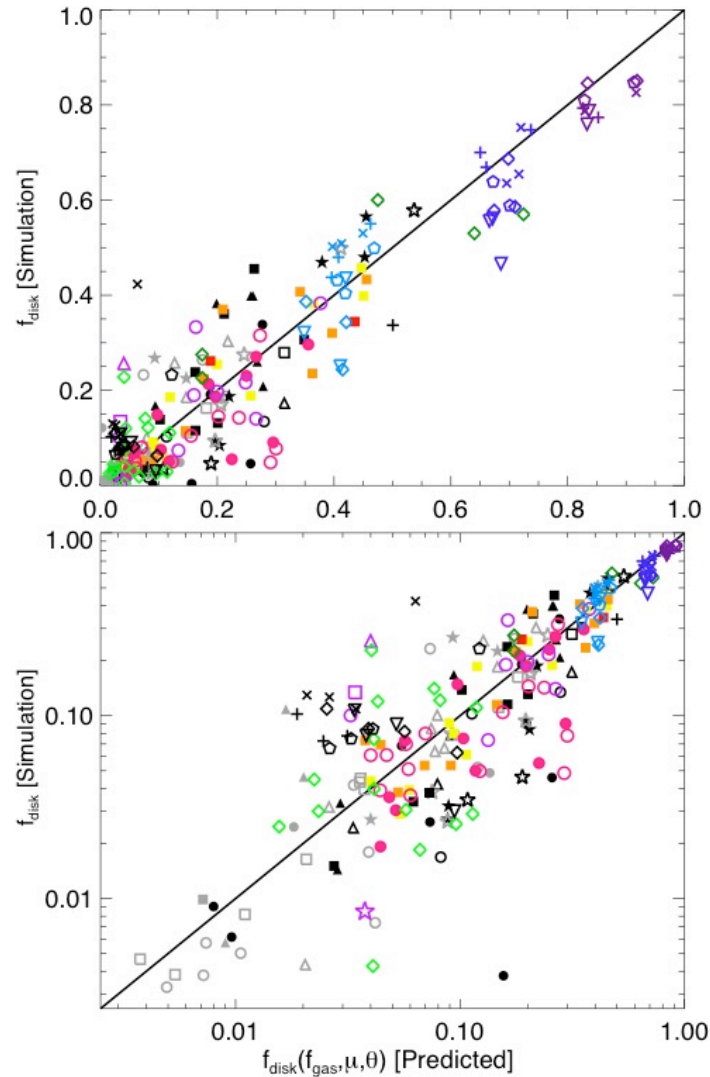
- Surface brightness profiles have a distinct bulge-like excess at galaxy center (a point made by many other authors, e.g., Aguerri et al. 01, Eliche-Moral et al. 06, Bournaud et al. 05,07, Naab & Trujillo 06, Combes talk yesterday)
- In models with gas/sf/fb, the central excess dominated by stars formed during the merger-induced starburst
- Remnant bulge and disk were both part of primary's disk material (might expect similar colors? Balcells talk thss morning).



starburst fraction \rightarrow bulge

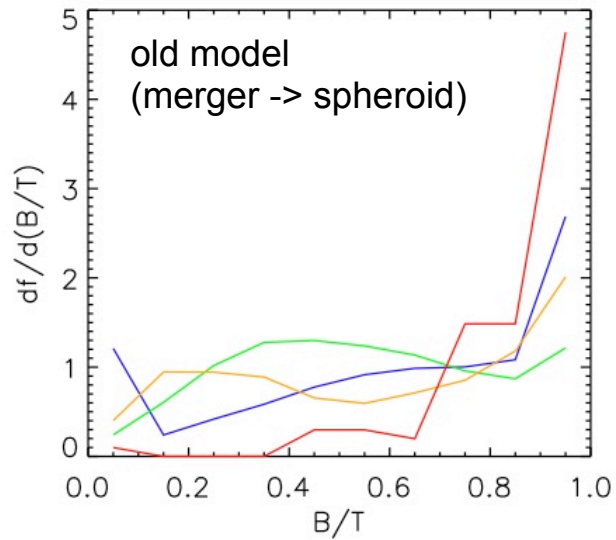
Bulge Formation

disk
mass
fraction
(measured from
simulations)

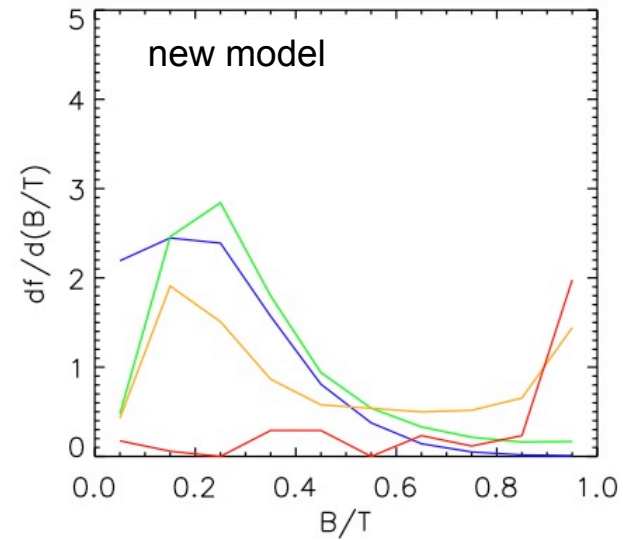


disk mass fraction (predicted, see Phil's talk on Friday)

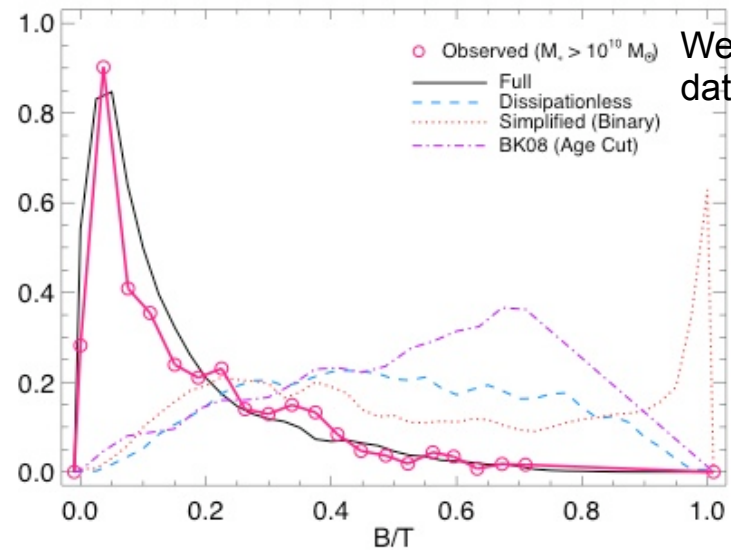
Implications for B/D Ratio



Somerville et al. (in prep.) SAMs



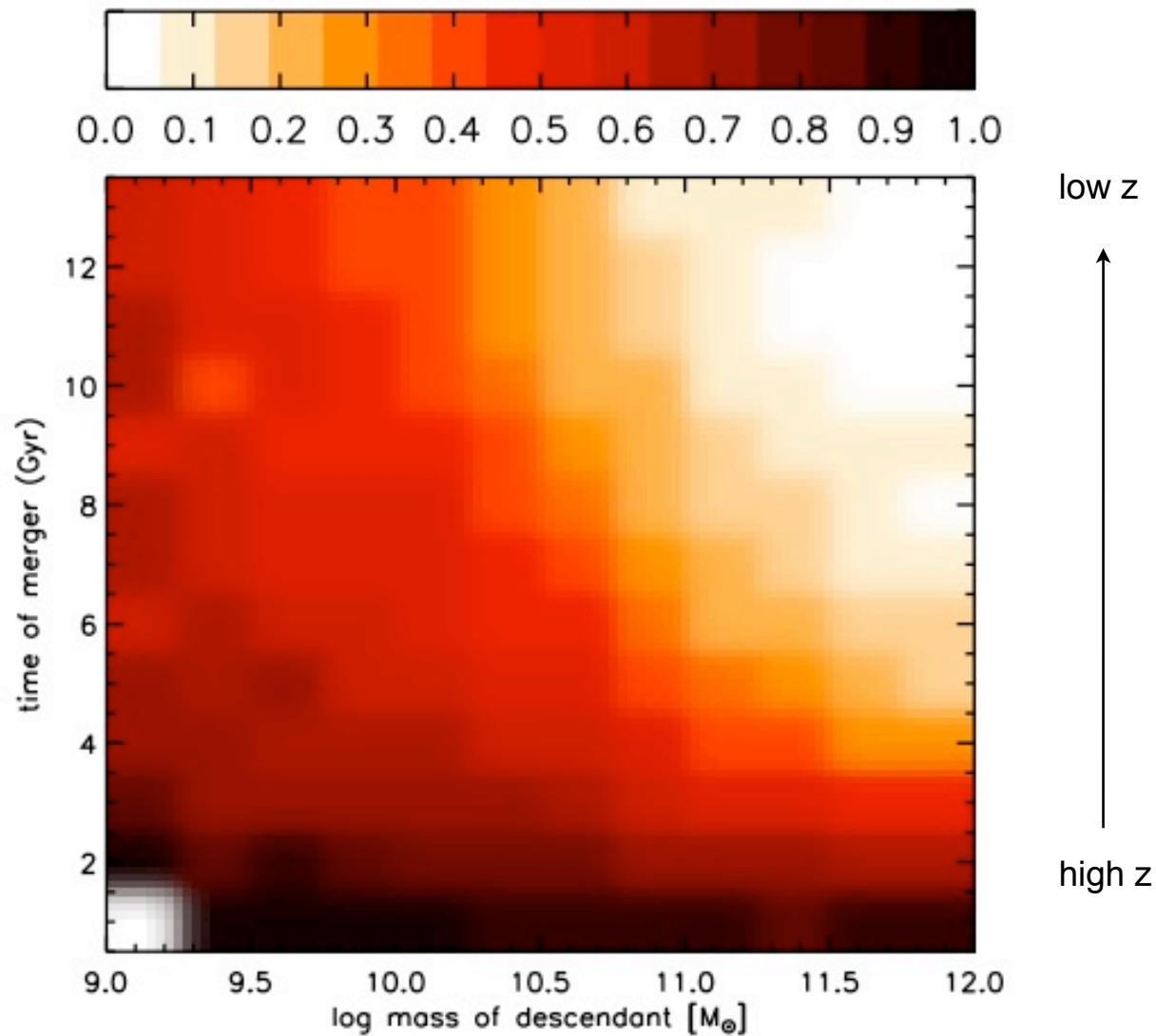
* Compare/
contrast to poster
by Koda and
Khochfar's talk
earlier today.



Hopkins et al. (in prep.) SEMs

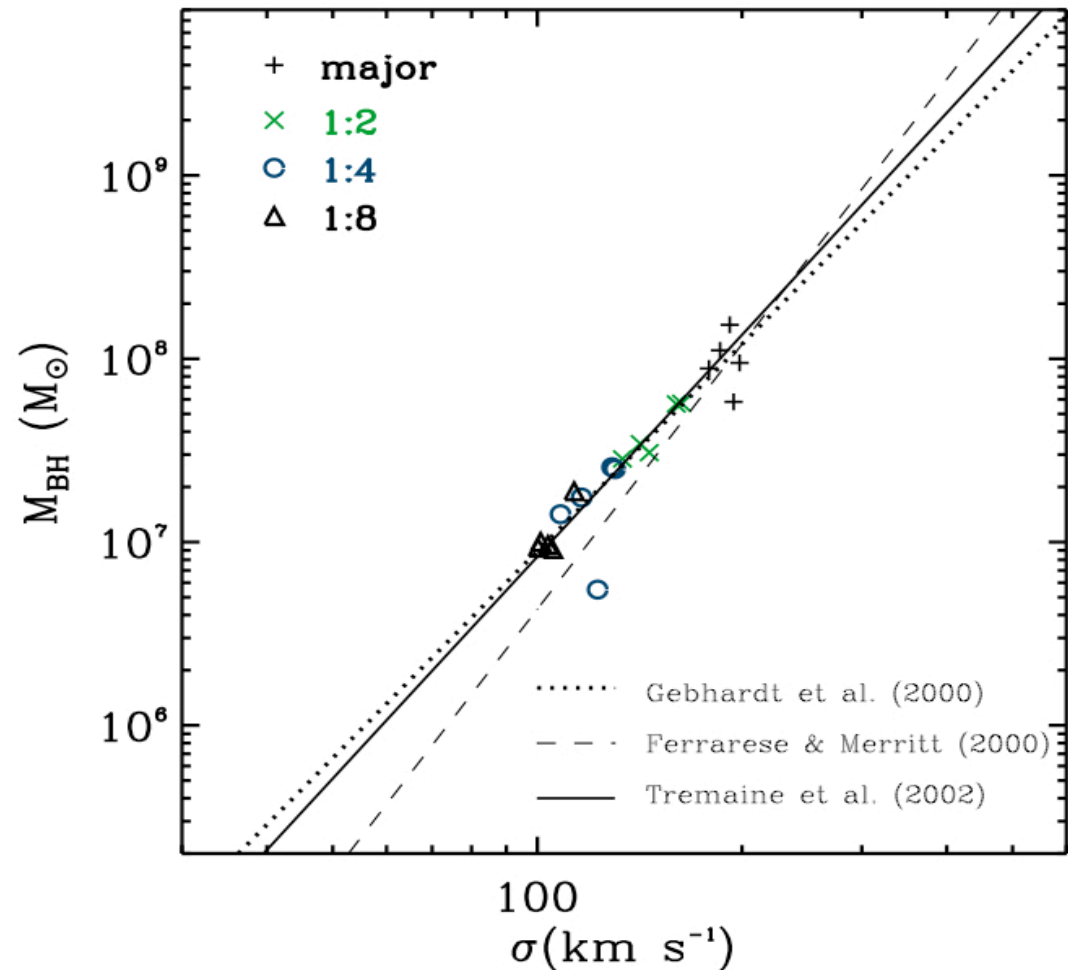
Implications for B/D Ratio

Merger Gas Fraction



BH-Bulge Correlations

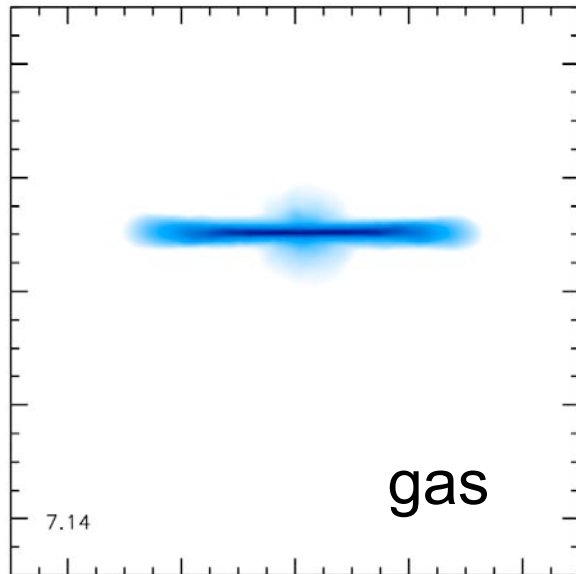
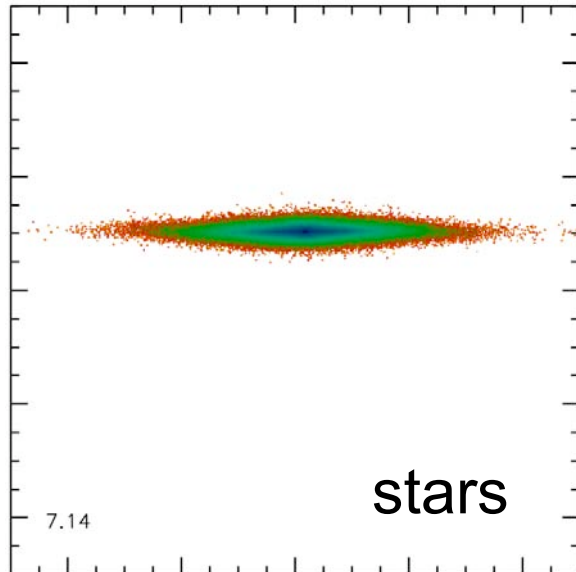
- BH growth is regulated by feedback and, similar to the case of major mergers, leads to a tight relation with properties of the stellar spheroid.



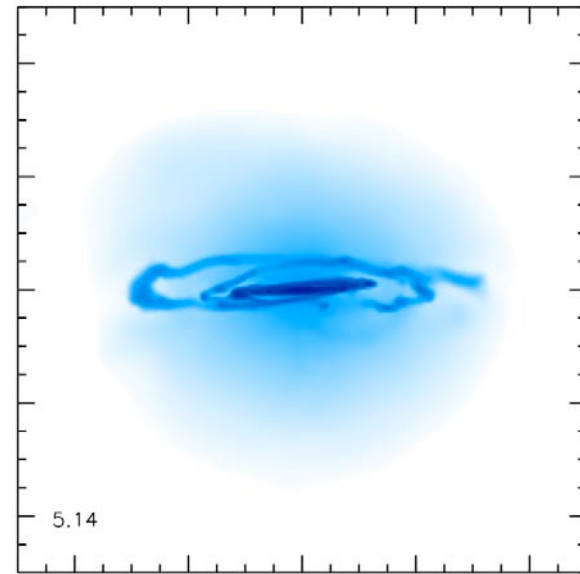
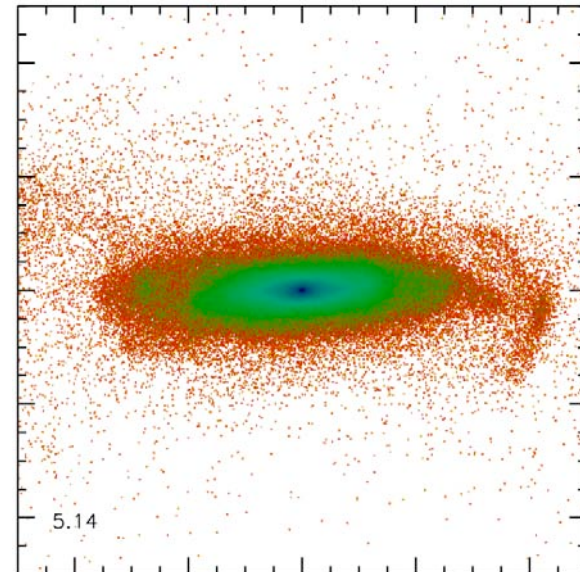
similar story to the major mergers - see, e.g., Di Matteo et al. (2005), Springel et al. (2005), & Hopkins et al. (2005/6/7/8)

Impact of Minor Mergers

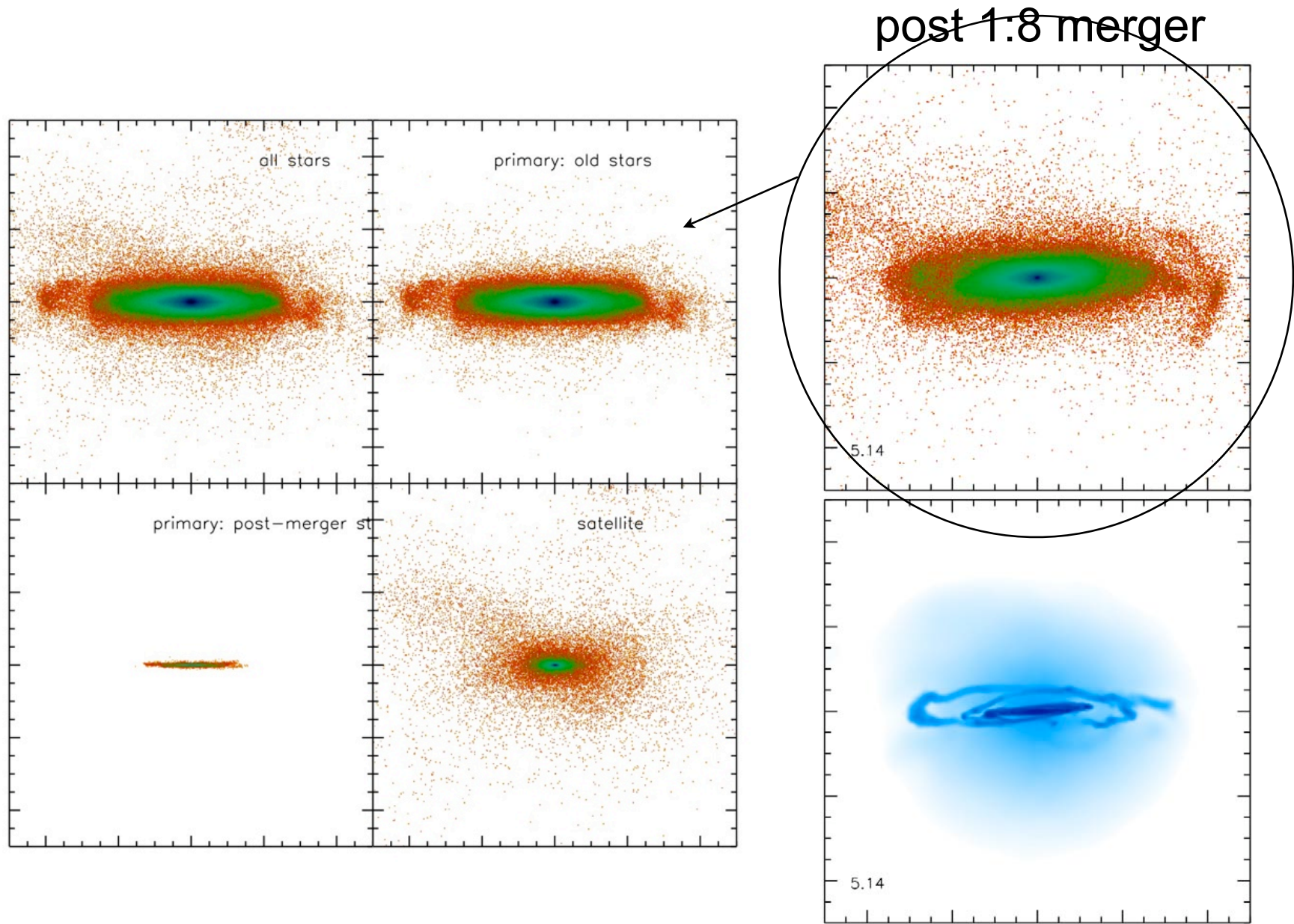
initial



post 1:8 merger

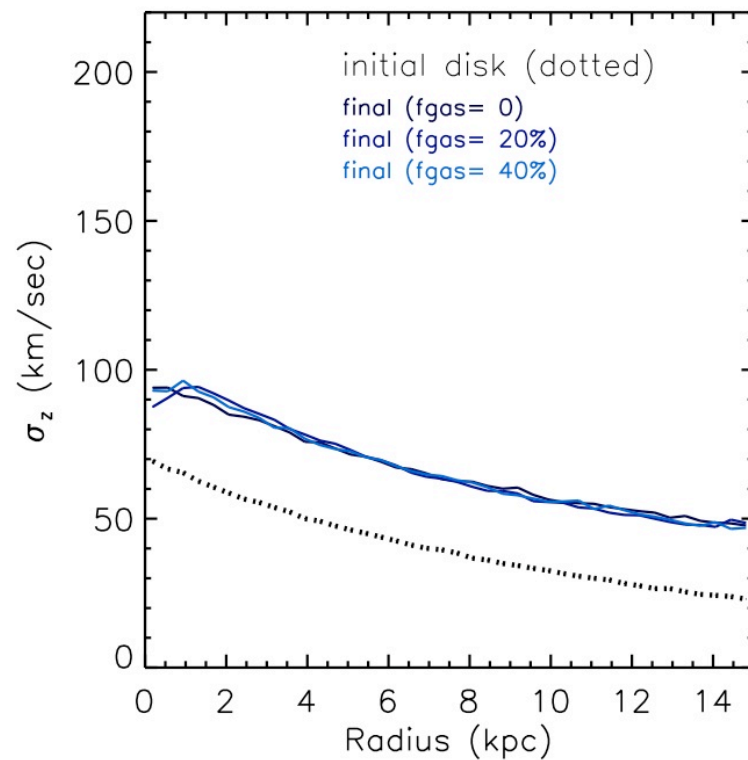
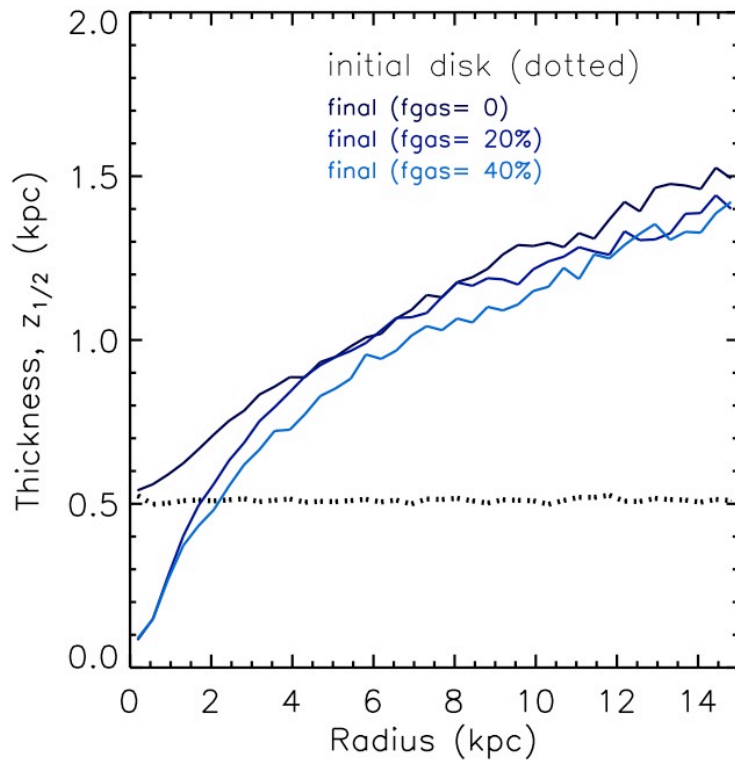


Impact of Minor Mergers



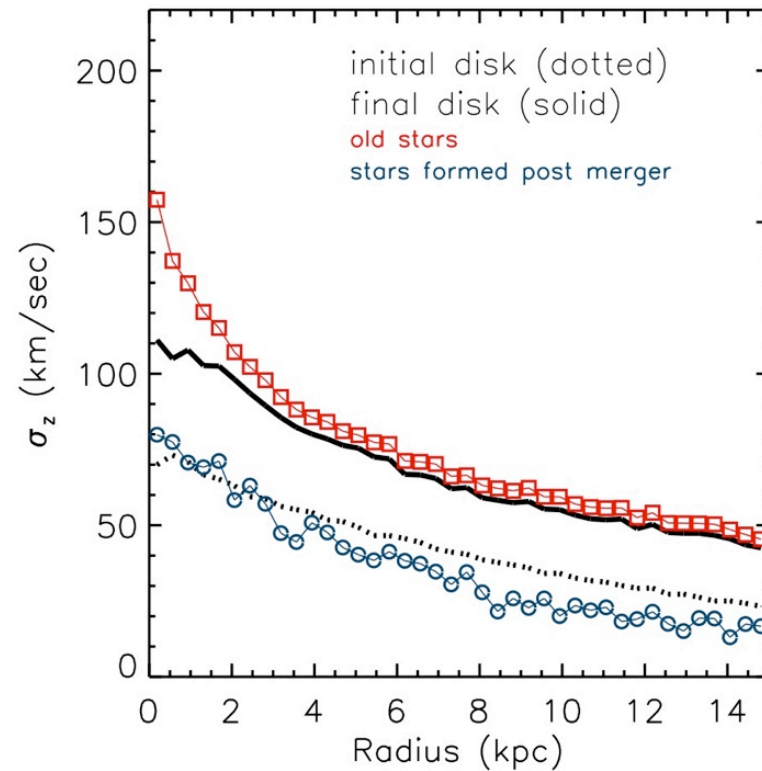
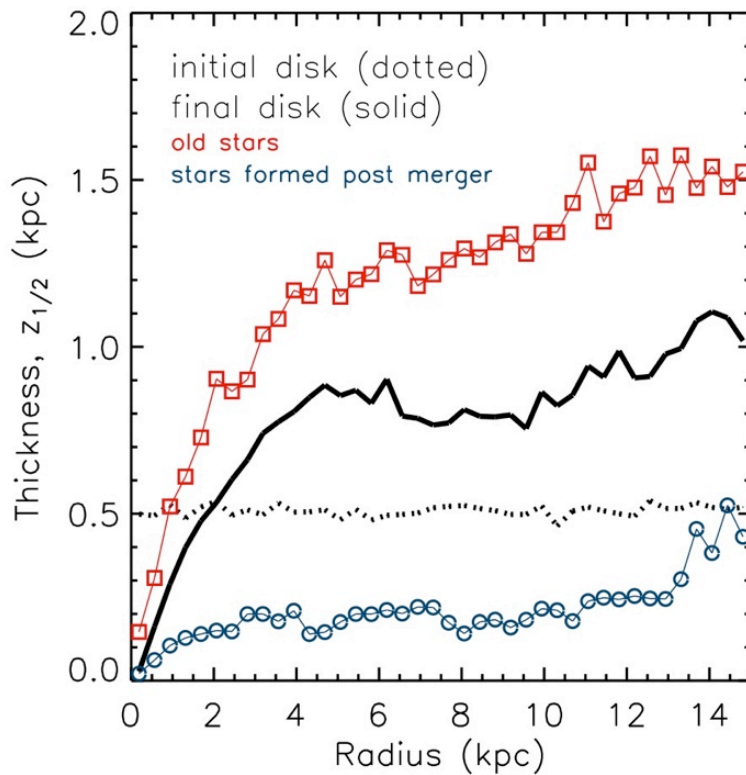
Implications for Galactic Disks

Mergers thicken and heat galactic disks (demonstrated by many authors, e.g., Quinn & Goodman 86, Hernquist & Quinn 86,90, Toth & Ostriker 92, Walker et al. 96, Velazquez & White 99, Kazantzidis et al. 08, see also Stewart's talk later today and poster by Purcell)



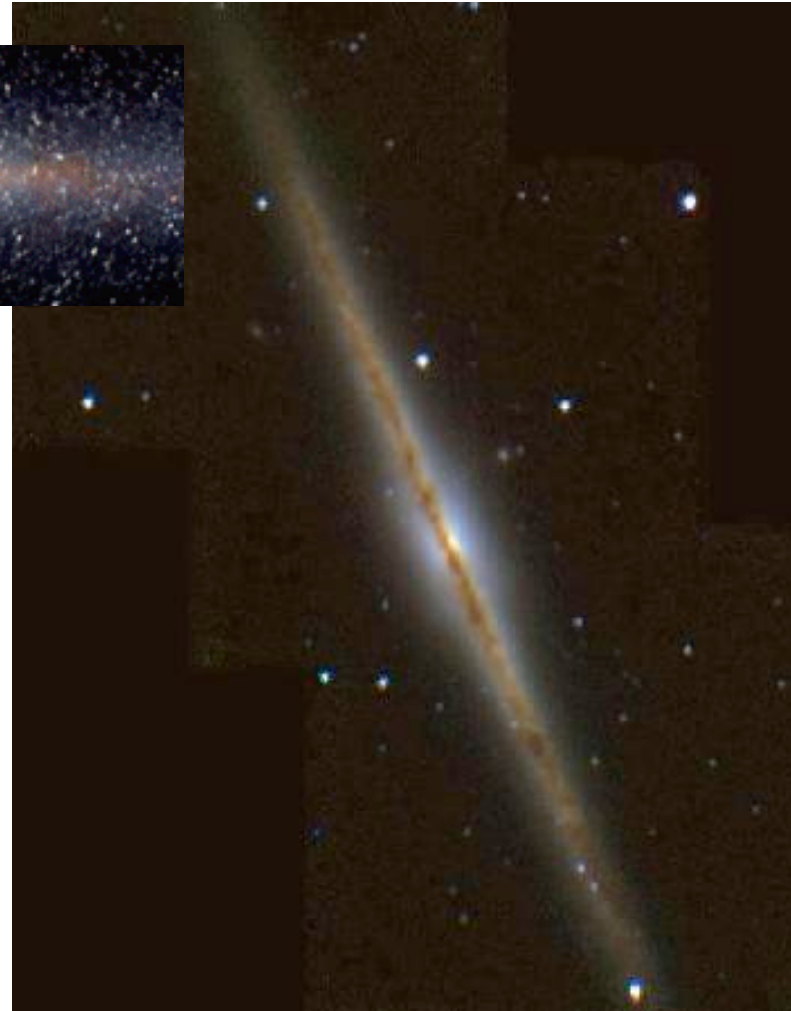
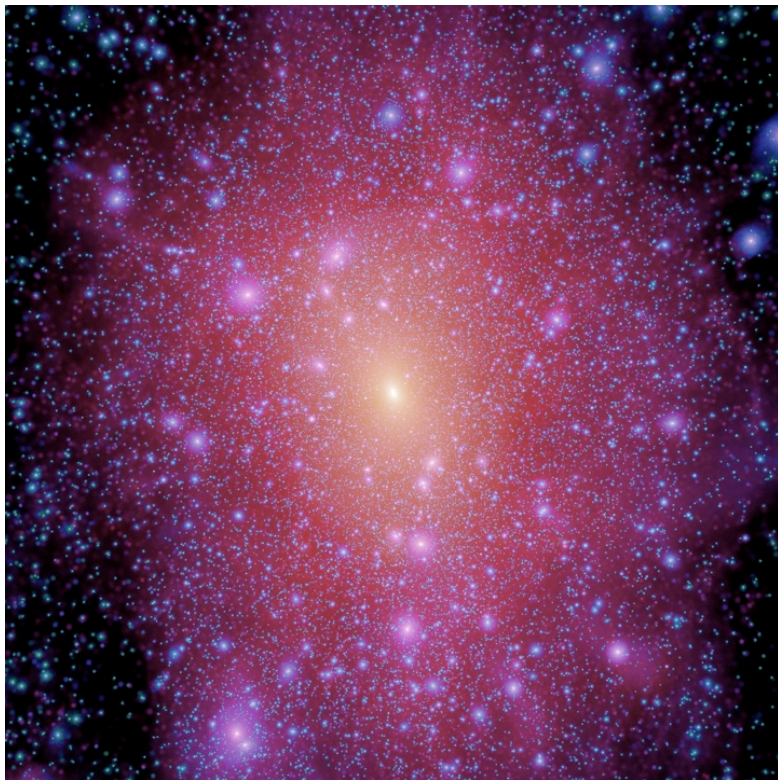
Implications for Galactic Disks

Stars formed in the remnant gas disk are thin and cold.
Supporting a long-stranding assertion.



Implications for Galactic Disks

Unclear whether this can help to explain bulgeless (or non-classical bulge) galaxies.



The Impact of Minor Mergers

- * We now have (the foundation of) a physical model that can predict the induced star formation and bulge growth during galaxy mergers.
 - * Many mergers, even major ones, can leave behind a disk component.
 - * This model can help to understand the abundance of low-B/T galaxies.
 - * Stars born from the remnant gaseous disk are thin and cold.
-
- Still a lot of work to be done